

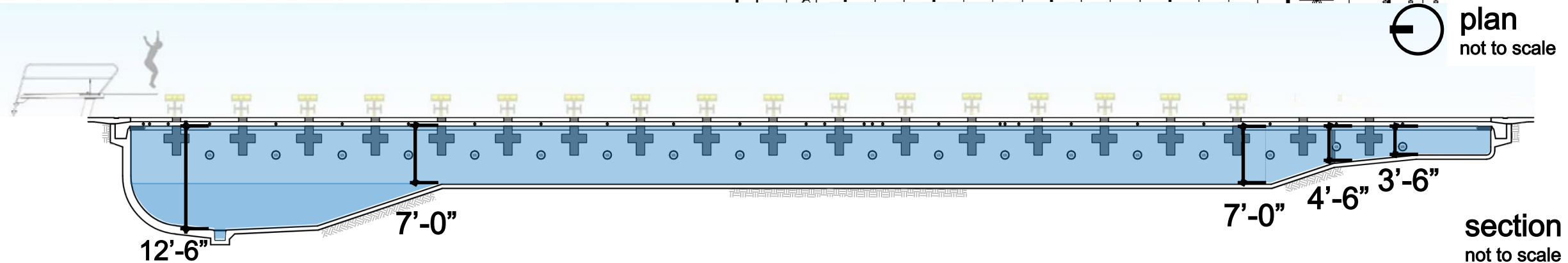
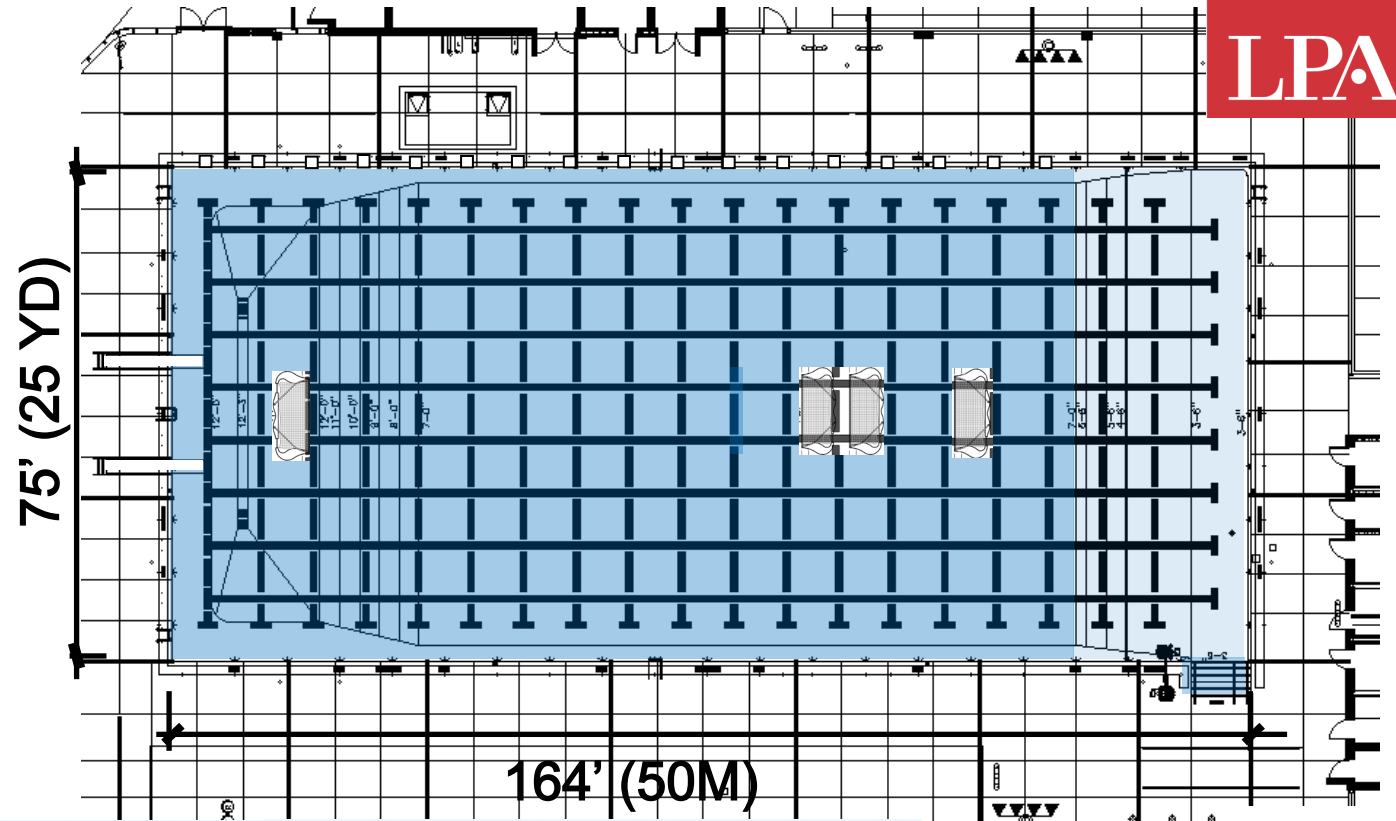
Approved Program

Approved Program - Aquatics

LPA

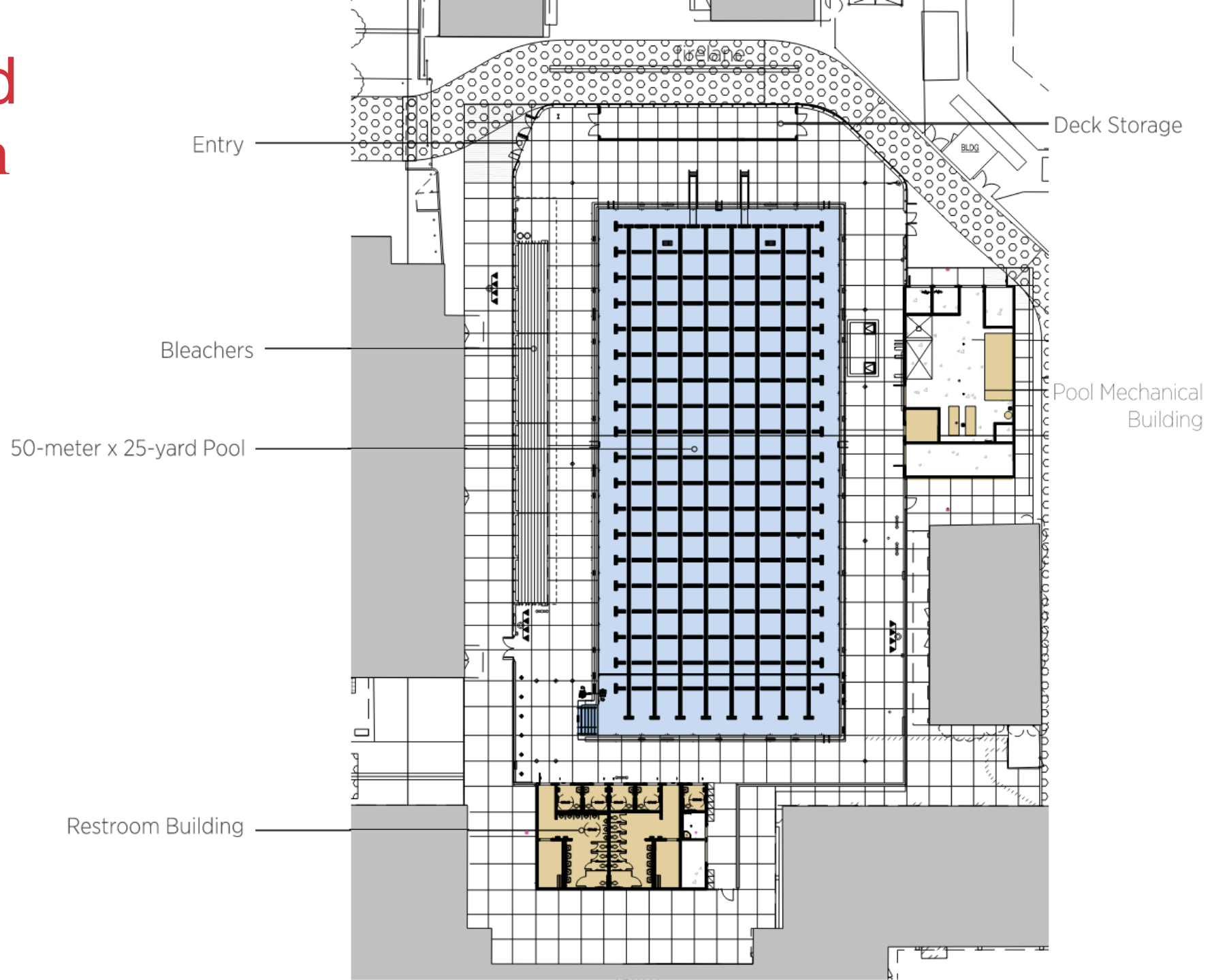
50-meter competition pool

- 17 deep water lanes 25yd
- 2 lanes (2000 s.f.) shallow learn to swim area
- 8 lanes 50m
- 25yd-30m Water polo floating goal
- 1M diving (2 ea.)
- Stairs, ladders, & chair lift exits
- Deep channel gutter, cantilever deck
- Underwater & deck lighting



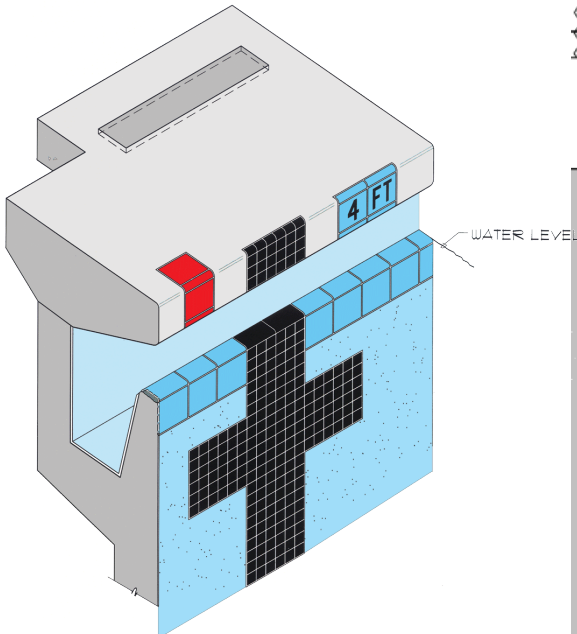
section
not to scale

Approved Site Plan

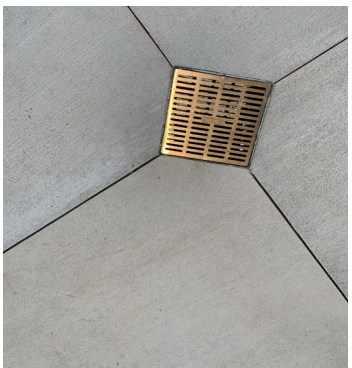


Aquatics Plans & Products

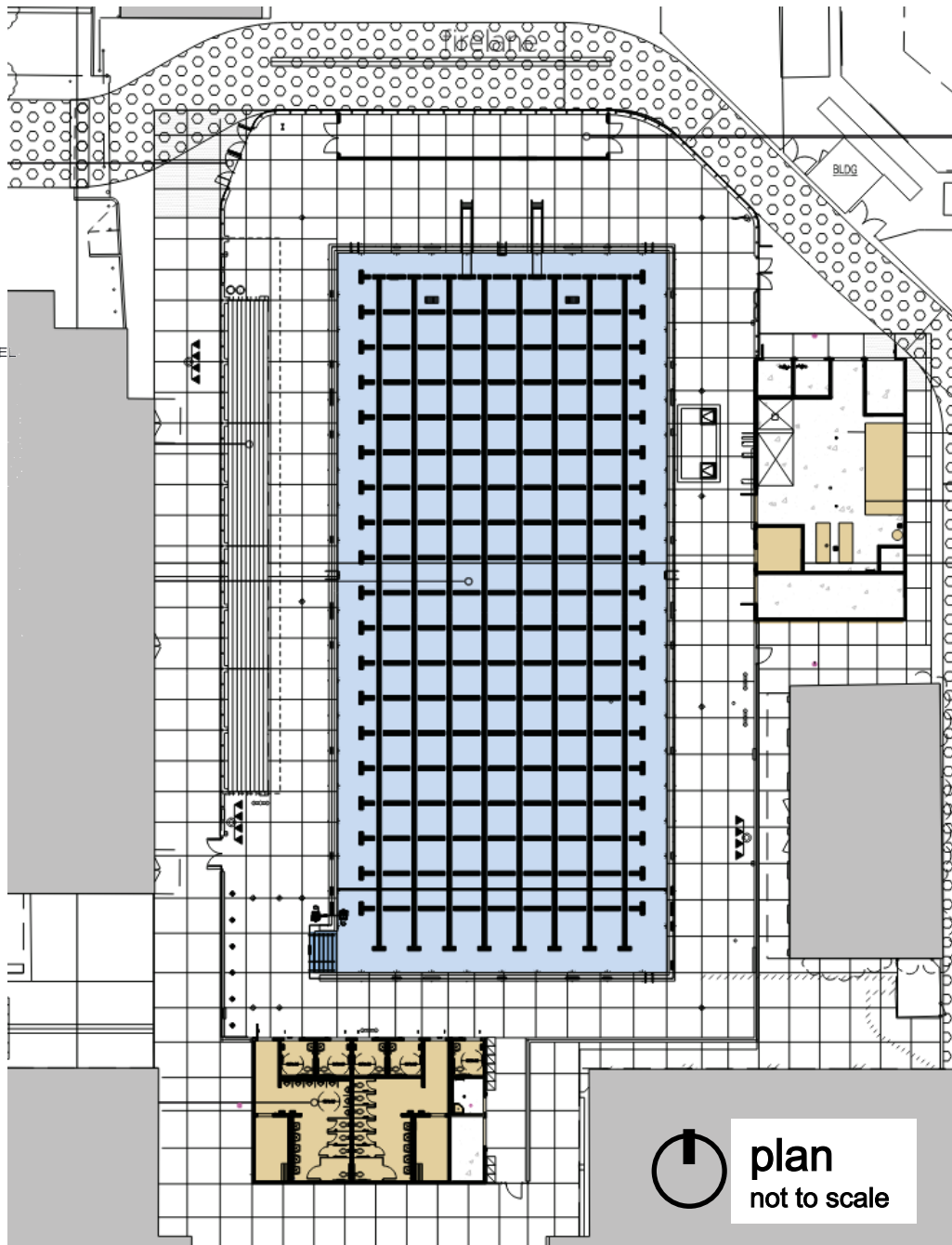
Aquatics - Pool Deck



Cantilever pool deck with deep channel gutter



Pool deck slot drain system



plan
not to scale



Aquatics Products

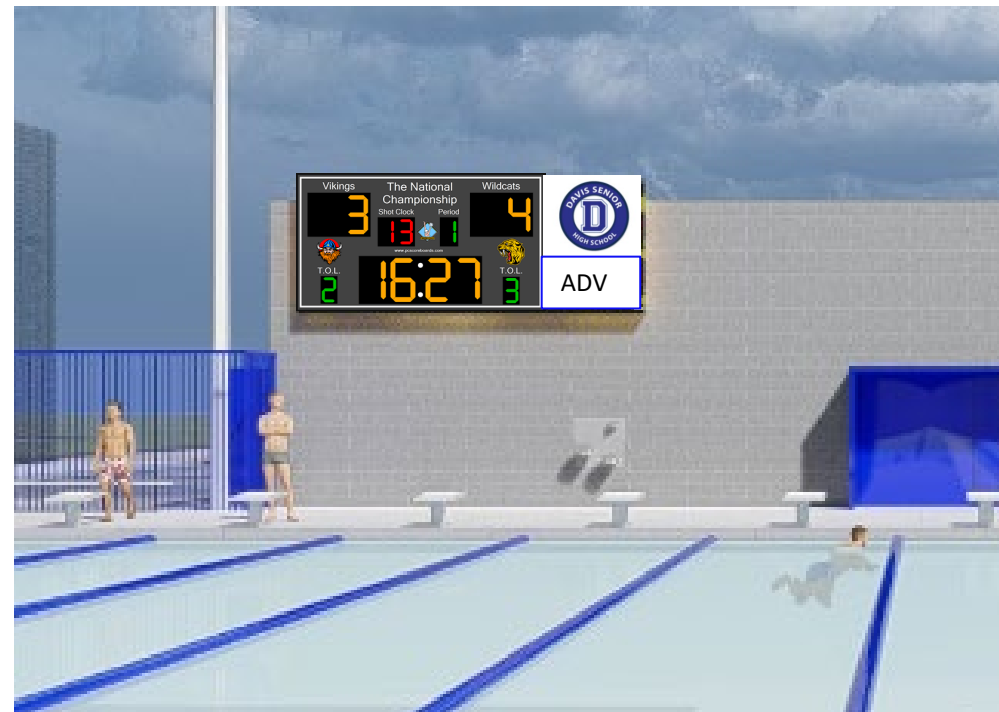
Scoreboard / Timing System
Colorado Time System LCD Active Video

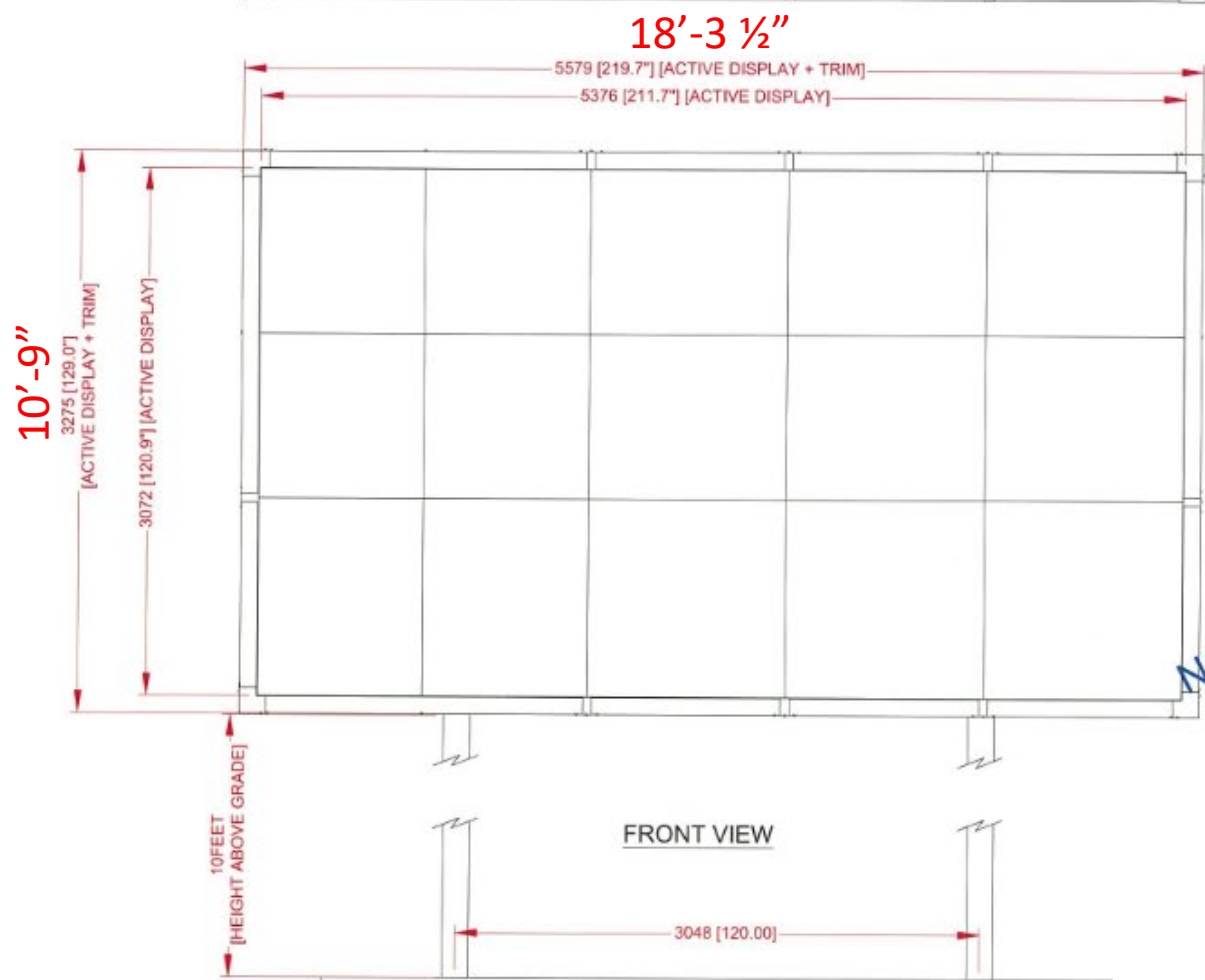


Racing



Water Polo





NOT FOR CONSTRUCTION

FRONT VIEW

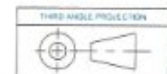
SIDE VIEW

- NOTES:
1. NOT FOR CONSTRUCTION- FOR DESIGN INTENT ONLY. VERIFY ALL CONSTRUCTION DETAILS WITH CTS
 2. DIMENSIONS ARE APPROXIMATE AND SUBJECT TO CHANGE DUE TO DETAILED DESIGN CONSIDERATIONS. ONLY APPROVED SHOP DRAWINGS SHOULD BE USED FOR CONSTRUCTION
 3. DESIGN AND CONSTRUCTION OF FRAME IS TO BE APPROVED BY OTHERS AND MUST MEET ALL LOCAL AND NATIONAL BUILDING CODES
 4. CTS ASSUMES NO RESPONSIBILITY FOR INSTALLATIONS PERFORMED BY OTHERS

SYSTEM WEIGHTS:

- DISPLAY: APPROXIMATELY 2420 LBS [1098 KG]
- FRAME AND EDGE TRIM: APPROXIMATELY 260 LBS [118 KG]

2680 lbs



REV	DESCRIPTION	DATE	APPROVED
A	RELEASE FOR INFORMATION	20210328	VS

REVISIONS			
REV	DESCRIPTION	DATE	APPROVED

DESIGNED BY	V. BEDARON	DATE	2/17/2021
DESIGNED BY		DATE	
PROJECT TITLE	Y5C 12MM 256H X 448W SMD FA OD 2PM DISPLAY OVERVIEW		
TRADE SECRET			
DATE			

ALL DIMENSIONS UNLESS OTHERWISE SPECIFIED ARE IN INCHES (MILLIMETERS). ALL DIMENSIONS ARE APPROXIMATE AND SUBJECT TO CHANGE DUE TO DETAILED DESIGN CONSIDERATIONS. ONLY APPROVED SHOP DRAWINGS SHOULD BE USED FOR CONSTRUCTION. THE USER SHALL BE RESPONSIBLE FOR VERIFYING ALL DIMENSIONS AND SPECIFICATIONS. THE USER SHALL BE RESPONSIBLE FOR VERIFYING ALL DIMENSIONS AND SPECIFICATIONS. THE USER SHALL BE RESPONSIBLE FOR VERIFYING ALL DIMENSIONS AND SPECIFICATIONS.



Y5C 12MM 256H X 448W
SMD FA OD 2PM
DISPLAY OVERVIEW

Y5C12S256X448FO-2PM

Aquatics Products



70-231-400

The One-Meter Duraform Stands are available with single guard rails one side, single guard rails two sides, and double guard rails two sides. One-Meter Stands like the Three-Meter units have hinged board anchors, which allow easy tilting of the board up to 180° to clear the pool edge during other activities such as swimming meets and water polo matches.

One-Meter structures are manufactured in four different heights to accommodate pools with deck-to-water-level dimensions from 1" to 13" (within U S Diving tolerance: 1M ± 2"). Deck-to-water-level dimension of the pool must be indicated when ordering.

70-231-300

The Three Meter Duraform Stands are manufactured of similar and identical components as the One Meter Stands. Many structural members are interchangeable. One-Meter to Three-Meter, such as guard rail supports, complete fulcrum units and anchor hinge assemblies. All structural members are individually coated with a coat of baked epoxy. All fasteners are corrosion resistant aircraft aluminum alloy with epoxy coating, except the deck hold down bolts which are silicon bronze. The most important single feature of the Three-Meter Duraform is the simple 8-point deck anchorage, which requires no special footings and can be installed on an existing deck, if concrete is of good quality and no less than 4 1/2" thick.

The guard rails are fabricated of stainless steel tubing and are secured to the structure with quick assembly stainless steel strap clamps. All fulcrum bearings are nylon and are adjustable for wear. There are lubrication devices mounted on the roller blocks for the roller and slide bearings. The hinge and rear support assembly is adjustable vertically in seven one-inch increments which makes possible the simple leveling of the Board on different deck slopes. The Three Meter Stand is available in only one model double guard rails both sides. It is manufactured in three different heights to accommodate deck level to water level dimensions of 0" to 13" (within U S Diving tolerance: 3M ± 2 3/8").

Diving Boards

6 Foot Moveable Lifeguard Chair

PLAN VIEW
SCALE: NONE

SIDE VIEW
SCALE: NONE

FRONT VIEW
SCALE: NONE

The data represents the latest knowledge available to us at time of preparation. However, Paragon Aquatics and others involved in gathering and preparing this drawing assume no liability for its use.

Supersedes Previous Specification Dated 10/93

Drawn by: SAW	Date: 4/4/05	Approved by: MC	Date: 4/4/05
Sheet Title: 6 Foot Moveable Lifeguard Chair		Revision Letter: B	
Drawing Number: SS-LG20.39-6		Sheet: 1 of 2	

© 2005 Paragon Aquatics

PARAGON AQUATICS
Pools & Water

1351 Route 55
LaGrangeville, New York
12540
Phone: (845) 452-5500
Fax: (845) 452-9428
www.paragonaquatics.com

© Paragon Aquatics 2005

Lifeguard Chairs

Aquatics Products



Colorado Block[®] by Paragon

For competitive swimming venues, two companies have established their products as essential for accurate, problem-free racing. Paragon Aquatics and its unrivaled starting platforms: Colorado Time Systems and its relay judging platforms (RJP) and other components.

Now they're all combined in one outstanding product, the patented Colorado Block, the result of a collaboration between Colorado Time Systems and Paragon.

The RJP mounts securely atop the Paragon platform with an exclusive system which does not require tools, providing the most accurate way by far to judge a swimmer's departure for starts and relay exchanges.

With the Colorado Block you can rely on accuracy to 1/100th of a second! The RJP portion of the block can decipher between weight shifts and actual starts.

The uniquely-engineered Colorado Block houses the connection plate, which protects the electronics from the harsh pool environment. Additionally, it enables the removal of the timing system without tools.

The Colorado Block is also a great training device. Swimmers can fine-tune their start reaction times and their relay exchanges.

As a leader in aquatics equipment, we've learned that sometimes two great companies are better than one.

Starting Platforms

Side step models available with stainless steel sponsor's panel.

(Shown with FINA Backstroke Bars atop a Track Start Competitor Side Step Model)

Adapter Kit for Paragon Starting Platform Sponsor's panel of stainless steel fits on platform's slide brackets to display sponsor info, school logo, etc. Also includes horn and deck plate mounting bracketry; Panel slides open for easy access to horn and deck plate. It is removable from the starting platform without tools.

Included: hardware, quick connectors, instructions, drill bit for retrofits and sponsor's panel slide brackets. These are factory installed on the starting platforms or can be easily retrofitted for field upgrades.

Track Start Side Step I.D. No. 22670D
 Long Reach Track Start Rear Mount I.D. No. 22671D
 Standard Competitor I.D. No. 22672D
 Long Reach Competitor I.D. No. 22673D
 Standard Paralyte/Quickset I.D. No. 22674D

Sponsor's panel with connection hub and horn

(Shown atop a Track Start Competitor Rear Mount Model)

Rear mount models available with plastic or stainless steel sponsor's panel.

WARNING: Starting Platforms are to be used only by trained competitive swimmers. Only shallow racing dives should be executed. Impact with the pool bottom can cause serious injury. Please refer

Section 131106 / 2.4Q
 Quantity 1
 Spectrum 27610
 Traveller II XRC BP500 Disabled Pool Lift
 with Caddy Cart, Spare Battery Pack
 and Deck Anchor

SWIM LIFT MODEL - TRAVELER II XRC BP500

Dimensions shown in drawings:
 Pool/Spa Wall: Ø86 11/16"
 Pool/Spa Deck: 36"
 Traveler Shown Max. height: 12"
 Clear Deck Space: 48"
 Overhead Transfer Assist: [1159.93] Ø 45 11/16"
 Deck Side Handset: 53 11/16" Adjustable
 Battery and Control Box: [1834.64] 72 1/4" Max
 Actuator: [1527.45] Ø 60 1/8"
 Seat Belt: [762] 31" Max
 SETBACK: 6" - 33"
 17"

Note:
 Maximum depth achieved when Traveler is setback to a maximum of 25".
 Lift will lower to 18" below pool deck at a maximum of 33" setback.

NOTE:
 DIMENSIONS VARY WITH SPECIFIC APPLICATIONS. SPECIFICATIONS ARE NOMINAL AND ARE SUBJECT TO CHANGE. PLEASE CONTACT SPECTRUM PRODUCTS FOR CUSTOM APPLICATIONS.

SPECTRUM Products		ENGINEERING DATA	
7100 Spectrum Lane Missoula, Montana 59808 406.542.9781 * 800.791.8056 Fax: 406.542.1158 www.spectrumproducts.com	PRODUCT: TRAVELER II XRC BP500 PRODUCT #: 27610 REVISION: C MATERIAL: 304 STAINLESS STEEL		

Starting Blocks: KDI Paragon Track Start Blue Top Wedge 17

Accessible Lift

Aquatics Products



Competition Goals:
Antiwave Nonfoldable
Floating Water Polo Goals Qty 6

Practice Goals: 6 each In-deck
Stanchions only for future
Possible Purchase of Antiwave
Nonfoldable Long Wall Water Polo Goals



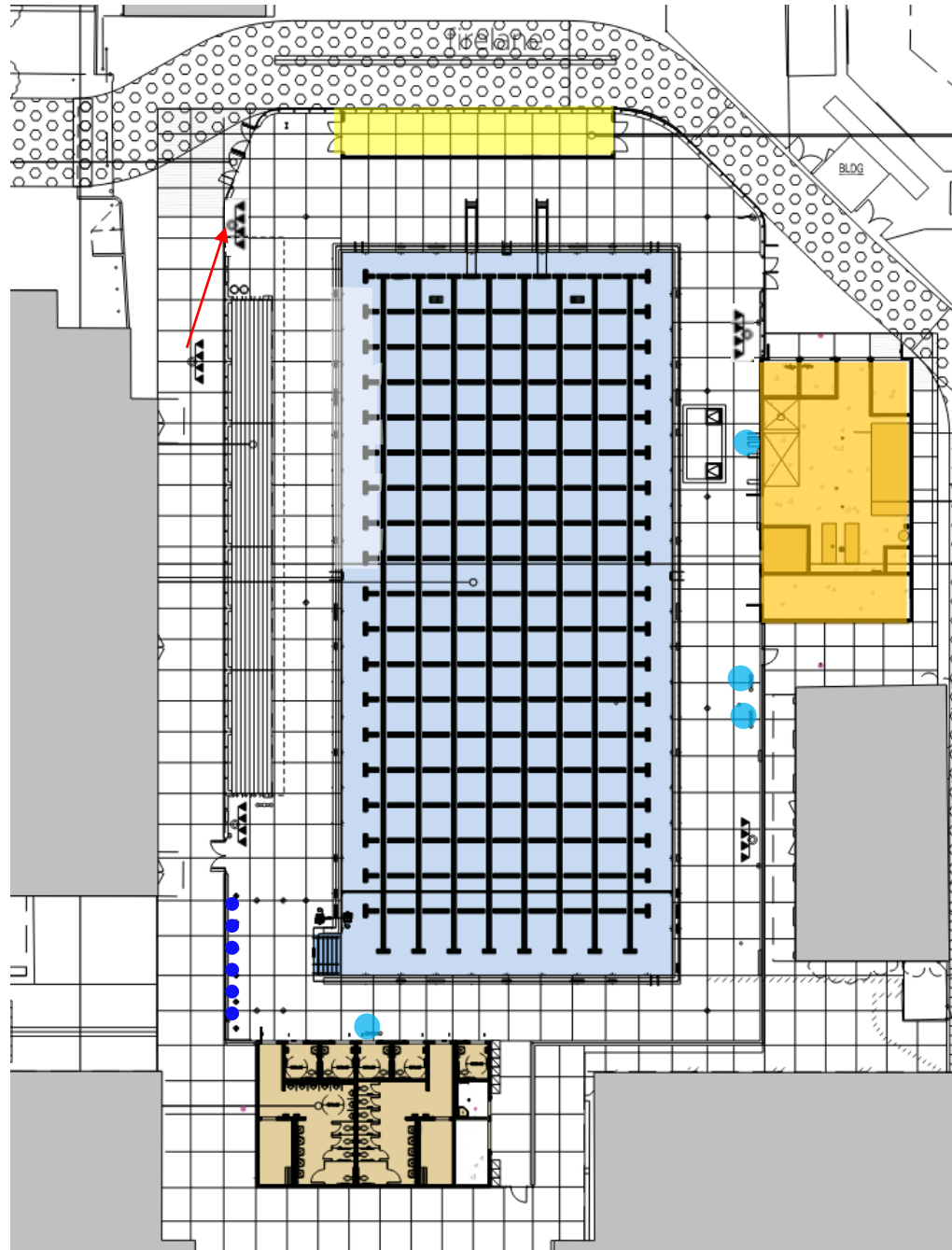
Universal Wall Goal - Long

The Universal Wall Goal is the ideal choice for competitive water polo in international pools. It is rugged, stylish and very cost effective.

Category: Water Polo

Site Plans & Features

Site – Deck Diagram



Legend

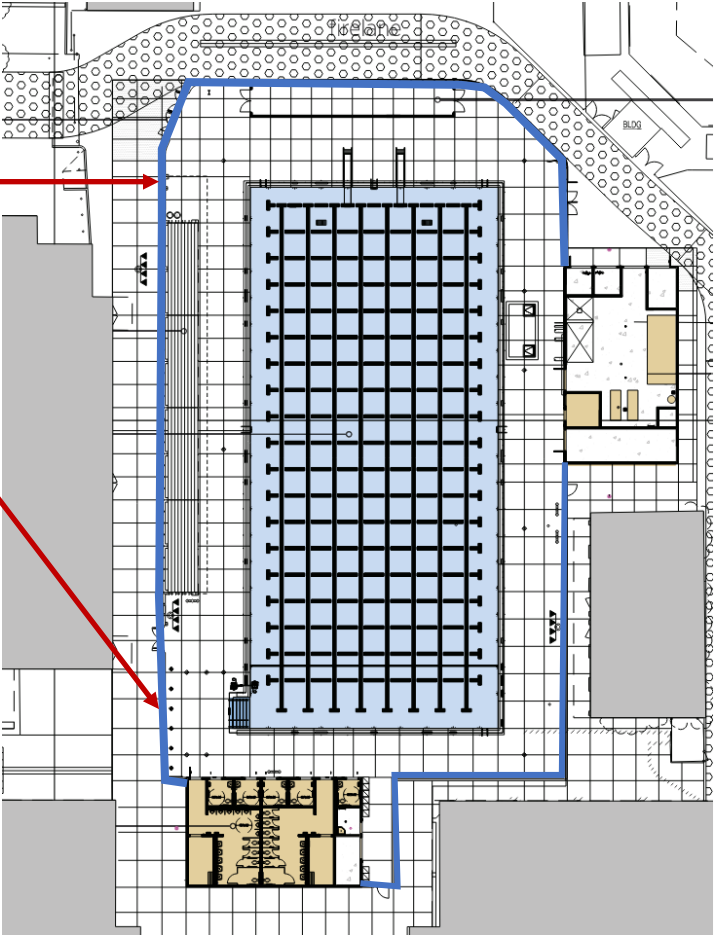
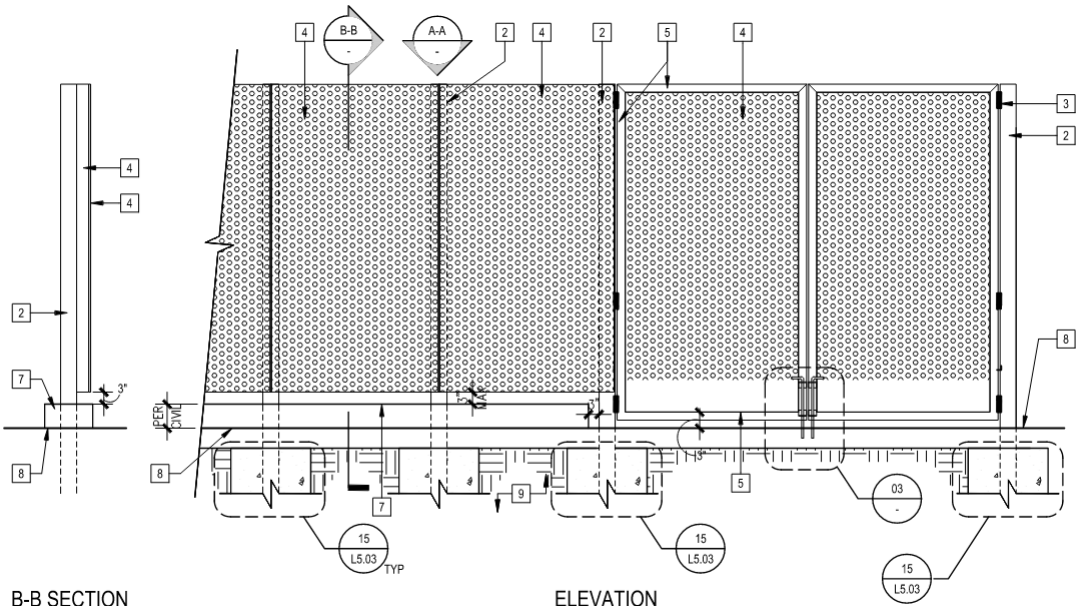
- Deck showers (16 total)
- Deck Mounted Drinking fountain

Building Fixture Requirements	#
Women's Toilets	10
Boys Toilets	6
Boys Urinals	8
Girls Showers	8
Boys Showers	8
Girls Lavatories	5
Boys Lavatories	5
Drinking Fountains	4
*Based on CBC 3115B/3116B; 50M Pool = 12,350SF Total Bathers: 824 Male: 412 Female: 412	

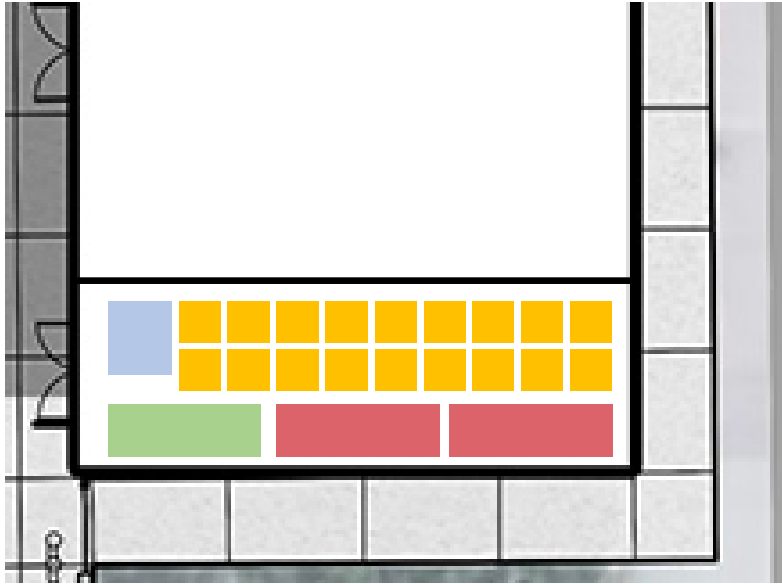
Fencing







8' Ht. Perforated Steel Panel Gates & Fences

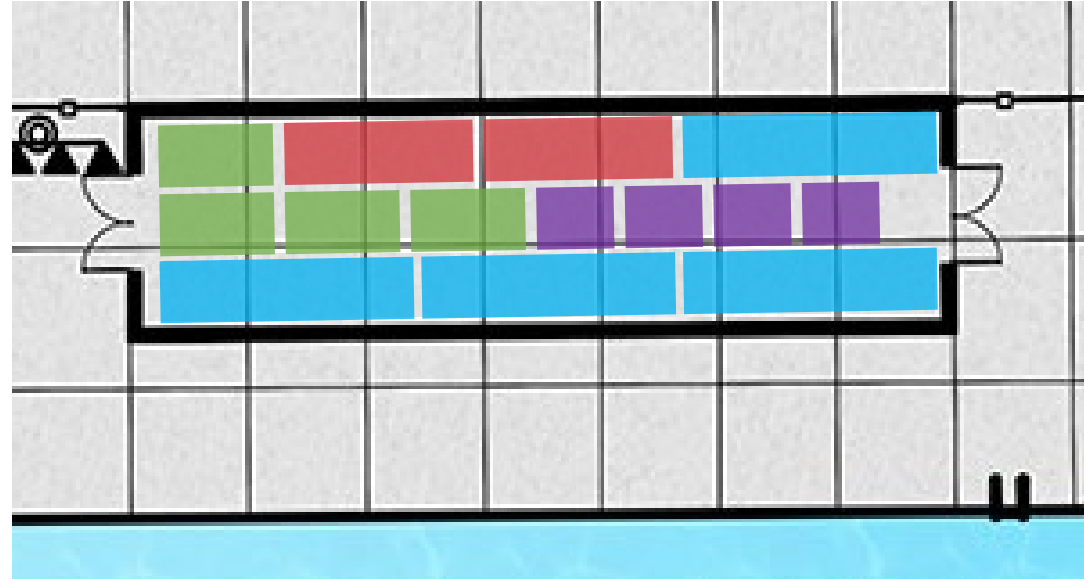


Site & Building - Storage







EQUIPMENT BUILDING

-  Racing Platform
-  Stationary Water Polo Goal
-  Work Out Gear
-  Timing System



ON-DECK STORAGE (open air)

-  Lane Line Reel
-  Floating Water Polo Goal
-  Pool Cover Reel
-  Lifeguard Chair

Site - Landscape Details & Products



Flag Pole 30'H.-

Flag Pole 30'H.-
Rope Halyard Ground Set Installation

Specifications

- A. Mounting Height: 30'
- B. Set Depth: 3'-0"
- C. Total Length: 33'-0"
- D. Butt Diameter: 6"
- E. Wall Thickness: .156"
- F. Top Diameter: 3.5"

Flagpole Sections: 1

Shaft Weight: 146 lbs.

Hardware Weight: 18 lbs.

Ground Sleeve Weight: 36 lbs.

*** Max Flag Size: 8' x 10'**

*** Max Wind Speed w/Nylon Flag: 91 mph**

*** Max Wind Speed No Flag: 138 mph**

*** Wind Speed Specifications from ANS/NAAM FP 1001-07**

Customer Name: _____ **Qty:** 1

Designer: _____ **Location:** _____

Project: _____

Notes: _____

ICC300616-TAV-100-ACL

Flag Uplight

HP2 LED (INTEGRAL DRIVER) ZU1 IP68 RATED

DATE: _____ PROJECT: _____ TYPE: _____

CATALOG NUMBER LOGIC: _____

CATALOG NUMBER LOGIC

Example: HP2 - LED - TR - x01 - SP - SAP - 10/11 - INC - MT - AH/TC

MATERIAL
(Blank) - Aluminum B - Brass S - Stainless Steel

SERIES
HP2 - Flush Mounted Faceplate

OptiLock™
LED - Cold Cathode Phosphor Technology

HOUSING
TR - Integral Housing

LED TYPE

- x58 - 12W LED/2700K x61 - 20W LED/2700K x43 - 34W LED/2700K
- x59 - 12W LED/3000K x62 - 20W LED/3000K x44 - 34W LED/3000K
- x60 - 12W LED/4000K x63 - 20W LED/4000K x45 - 34W LED/4000K

OPTICS

- SP - Spot (15°) FL - Flood (35°)
- NFL - Narrow Flood (25°)** WFL - Wide Flood (60°)

FINISH (See page 2 for full-color swatches)

Standard Finishes (BZP, BZM, BLR, BLW, WHR, WHW, SAP, VER)

Premium Finishes (APR, AMG, AOW, BCM, BGE, BPP, CAP, CMG, CRL, CRM, HUG, MDS, NBR, OCP, RMG, SDS, SSG, TFX, WCP, WIR)

Also available in RAL Finishes

Brass Finishes (MAC, POL, MIT)

Stainless Steel Finishes (MAC, POL)

ACCESSORY***

- 10 - Spread Lens
- 11 - Honeycomb Baffle
- 12 - Soft Focus Lens
- 13 - Rectilinear Lens

DRIVER TYPE****

- D12INC - 12W Driver
- D20INC - 20W Driver
- D34INC - 34W Driver

INPUT VOLTAGE

- MT - 120/208/240/277 Multi Tap

OPTIONS

- AH - Accessory Holder
- TC - Traction Control Lens
- GM-R - Round Grout Mask
- GM-S - Square Grout Mask
- GS - Glare Shield*****
- HD - Half Dome*****
- RG - Rock Guard*****
- RO - Rock Guard with Optical Opening*****

B-K LIGHTING MADE IN THE USA 959.438.5800 | INFO@BKLIGHTING.COM | BKLIGHTING.COM

THIS DOCUMENT CONTAINS PROPRIETARY INFORMATION OF B-K LIGHTING, INC. NO PART OF THIS DOCUMENT IS TO BE REPRODUCED, COPIED, OR TRANSMITTED IN ANY FORM OR BY ANY MEANS, ELECTRONIC OR MECHANICAL, WITHOUT SPECIFIC WRITTEN AUTHORIZATION OF B-K LIGHTING, INC. © STRICTLY CONFIDENTIAL. 06/16/2021 SKU 619 SUB-2406-00

Trash Receptacles

Chase Park



- Litter Receptacles**
- Receptacle features a hinged side panel door for easy emptying.
 - Constructed of cast aluminum sides and door, with spun aluminum top and polyethylene base filled with concrete.
 - Door hinge and latch are stainless steel.
 - Top and side-opening receptacle can be freestanding or surface mounted.
 - Logo band available with both top opening and side-opening styles.
 - Sand pan optional with side opening unit.
 - Capacity of the top-opening receptacle is 40 gallons, for side-opening, 36 gallons.
 - An optional keyed lock may be specified.
 - Custom fit polyethylene liner in black, standard with all receptacles.
 - Chase Park also available in a Dual-use, side opening receptacle and a single-use, top opening receptacle.
 - Recycling litter available with 5", or 10" diameter top openings to collect recyclable material.
 - Labels with recycle symbol and specified recyclable material printed on high performance, exterior grade UV protected vinyl, mounted securely to each unit.
 - For more information on signage options, visit landscapeforms.com

	STYLE	DIA-METER	HEIGHT	PRODUCT WEIGHT
	Top-Opening	24"	39"	166 lb.
	Side-Opening	24"	39"	162 lb.
	Top-Opening with logo band	24"	39"	173 lb.
	10" Top-Opening with signage	24"	39"	167 lb.
	Side-Opening Dual-use	24"	39"	163 lb.
	Side-Opening Dual-use with logo band unit	24"	39"	172 lb.

Designed by Kipp Stewart

No Flagpole; the flag will be displayed on the scoreboard video



Deck Mounted Showers



COL-2C, COL-3C, COL-4C, COL-5C
2 – 5-Person Column Showers

- One Set of Supply Connections Required for Five Stations
- Preassembled, Complete with Drain Fitting

Specifications

Materials

All exposed parts are type 304 stainless steel or polished chrome-plated brass. Valve manifold is cast brass. Drain fitting is cast iron and supply inlets are copper tubing.

Standard Equipment

Column Shower

Constructed of type 304 stainless steel. Column and column cap are 16 gauge, and base flange is 13 gauge. Access panel located near bottom of column. Each station on column shower equipped with a stainless steel soap tray.

Valve Type as Selected

For more information on each valve type, please enter the model number in the search box at www.bradleycorp.com.

Flow Control

A 1.5 GPM (5.7 LPM) flow control is standard. Actual flow may vary, but will not exceed 2.0 GPM (7.6 LPM) max.

Drain Fitting

Cast iron with five stainless steel mounting bolts.

Supply Inlets

Constructed of 3/4" type "L" copper tubing.

Optional Privacy Compartments

Partitions

Fabricated of 20 gauge 300 series stainless steel sheets polished to a #4 finish. Sandwich type construction with waterproof cores securely bonded between sheets. Partitions are secured to posts with 14 gauge type 300 stainless steel stirrups and stainless steel screws.

Posts

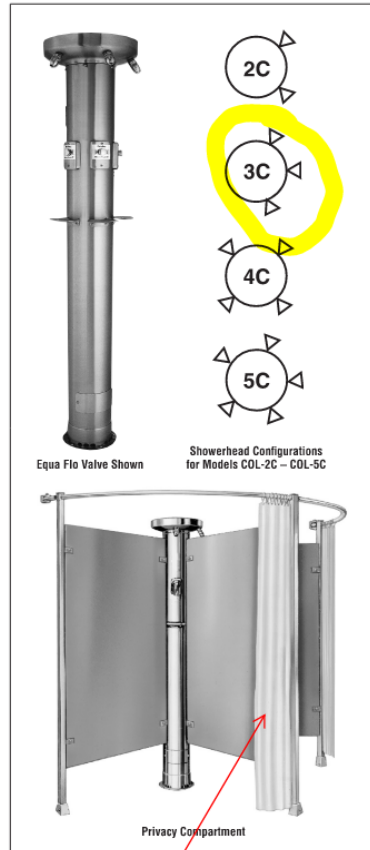
Fabricated 18 gauge 1-1/4" square x 90" stainless steel tubing. Post is secured to floor with an expansion anchor and a concealed foot angle which allows plus or minus 1/2" vertical adjustment.

Curtains

Curtain rails fabricated of 300 series #4 finish stainless steel cylindrical tubing. Curtain hooks are steel wire with a zinc chromate finish. Curtains are 60" W x 74" H and fabricated of heavy gauge translucent vinyl with hemmed edges and aluminum grommet reinforced eyelets.

Hardware

All exposed fasteners are vandal-proof stainless steel. Post shoes are anodized aluminum and finished to match stainless steel.



NO CURTAIN
ASSEMBLY

Drinking Fountain (per standards)



Haws®

model 3612

ADA Stainless Steel Bottle Filler and Drinking Fountain

FEATURES & BENEFITS

ADA COMPLIANCE

ADA-compliant bottle filling station and dual-height high-low drinking fountain required for wheel chair use, and for the standing person.

FRONT APPROACH

Face all three water stations forward and the overall footprint needed is only 73 inches wide, saving 33% of the hard scape required for access compliance. This also allows the fountain to be placed with its back to within 8 inches of a wall or a fence.

BOTTLE FILLER

The ADA-compliant open design bottle filling station offers a 17" high bottle area, and open sides making this push button operated bottle filling station more accessible to users.

STAINLESS STEEL VALVES

The push-button activated valves offers the only all stainless steel valve body that is machined out of solid bar stock, is fully serviceable through the front of the push button assembly offering access to the water control cartridge and integral water supply strainer, and with front access to the water stream height adjustment for easy maintenance without having to remove the valve. Operating pressure range of 30 to 90 psi (2.1 to 6.2 bar).

BUBBLER HEAD

Polished chrome plated brass bubbler head with integral 5/8" dia. threaded shank for vandal resistant strength, and top-down access for nozzle replacement or water line service, with .45 gpm flow rate.

CONSTRUCTION

Heavy-duty stainless steel with silver powder-coated color finish, and stainless-steel drinking fountain bowls. Modular construction allows for easy replacement or rearrangement of drinking fountain bowls and bottle filler modules.

DRAIN CLEAN-OUT

Top-down access to the drain allows the fountain to be cleaned without taking the unit apart, good for outdoor settings with drain-cloggings and/or leaves.

OPTIONS

Pet Fountain: Model 3670, dog bowl attachment for 3600 series pedestal fountains.

Hose Bib: Model 3660, lockable hose bib attachment for 3600 series pedestal fountains.

Installation Aid: Model MTG.3600, mounting guide for 3600 series pedestal fountains.

Freeze-Resistant Option: Model 3612FR, ADA stainless steel freeze-resistant bottle filler and dual fountain.

For more information, visit www.hawsco.com or call (888) 640-4297.



SPECIFICATIONS

Model 3612 outdoor, ADA-compliant pedestal mounted bottle filler and high-low drinking fountain shall include a heavy-duty stainless steel pedestal with matte silver powder-coating, push-button operated stainless steel valves with front-accessible cartridge and flow adjustment, polished chrome-plated brass vandal-resistant shielded bubbler heads with integral 5/8" dia. threaded shank and top-down access to renewable nozzles, large-opening bottle filler with quick-fill 1 gpm flow rate, 100% lead-free waterways, polished chrome-plated vandal-resistant waste strainers with top-down clean-out access to the drain, vandal-resistant access plates, integral mounting feet, and 1-1/2" slip waste

APPLICATIONS

The 3612 offers a solution for the changing needs of outdoor settings as well as outdoor wheelchair access, appealing to all users through accessibility and safety. This outdoor fountain is ideal in areas such as parks, schools, and other outdoor areas where hydration facilities are needed. Model meets all current Federal Regulations for the disabled including those in the Americans with Disabilities Act, and complies with Prop 65. Certified by CSA to NSF/ANSI 61, section 9 and NSF/ANSI 372; and was evaluated to be compliant to US and Canada Plumbing Codes including Uniform Plumbing Code (UPC), International Plumbing Code (IPC) and National Plumbing Code of Canada (NPC).

Lighting — Entry & Beacon Lighting



Aquatic Center - View at Entry

Architectural Details & Products

Architectural Lighting



LED wall luminaire - wide spread light distribution



Application
This LED wall luminaire with a wide spread light distribution can be used to illuminate ground surfaces along walls. Can be used for uplight or downlight applications.

Materials
Luminaire housing constructed of die-cast marine grade, copper free (≤ 0.3% copper content) A360.0 aluminum alloy
Clear safety glass
Reflector made of pure anodized aluminum
Silicone applied robotically to casting, plasma treated for increased adhesion
High temperature silicone gasket
Mechanically captive stainless steel fasteners

NRTL listed to North American Standards, suitable for wet locations
Protection class IP65
Weight: 6.8 lbs

Electrical
Operating voltage 120-277VAC
Minimum start temperature -30°C
LED module wattage 15.8W
System wattage 21W
Controllability 0-10V dimmable
Color rendering index Ra > 80
Luminaire lumens 2187 lumens (3000K)
LED service life (L70) 60,000 hours

LED color temperature
 4000K - Product number + **K4**
 3500K - Product number + **K35**
 3000K - Product number + **K3**
 2700K - Product number + **K27**
 Amber - Product number + **AMB**

Wildlife friendly amber LED - Optional
Luminaire is optionally available with a narrow bandwidth, amber LED source (585-600nm) approved by the FWC. This light output is suggested for use within close proximity to sea turtle nesting and hatching habitats. Electrical and control information may vary from standard luminaire.

LED module wattage 29.4 W (Amber)
System wattage 34.6 W (Amber)
Luminaire lumens 851 lumens (Amber)

BEGA can supply you with suitable LED replacement modules for up to 20 years after the purchase of LED luminaires - see website for details

Finish
All BEGA standard finishes are matte, textured polyester powder coat with minimum 3 mil thickness.

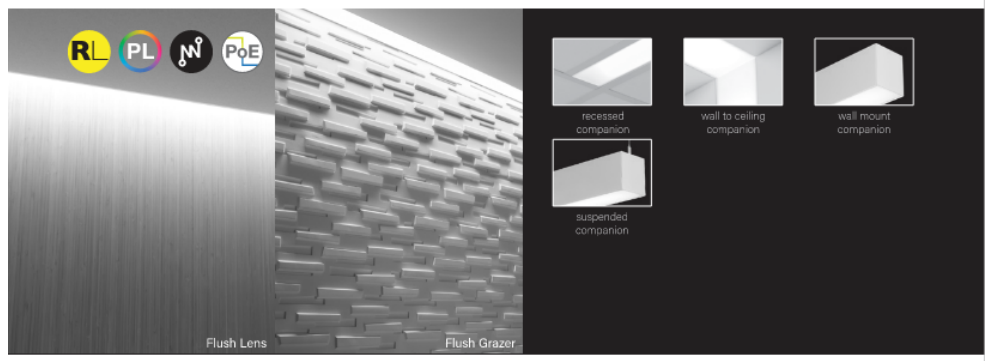
- Available colors Black (BLK) White (WHT) RAL: Bronze (BRZ) Silver (SLV) CUS:

LED wall luminaire - wide spread light distribution	LED	A	B	C
22383	15.8W	9 7/8"	4 1/4"	7 1/4"

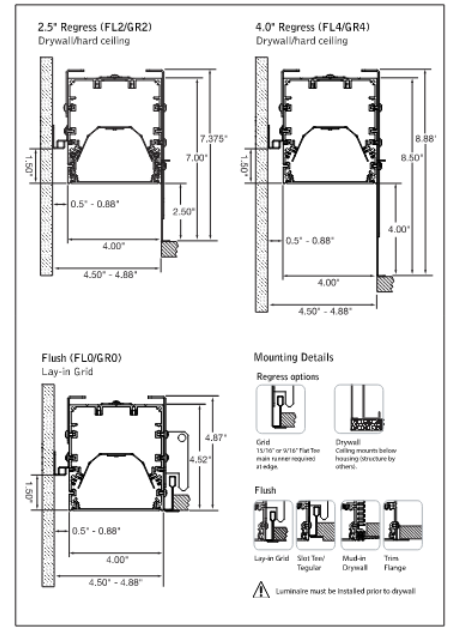
Type: _____
 BEGA Product: _____
 Project: _____
 Modified: _____



Seem® 4 LED PERIMETER



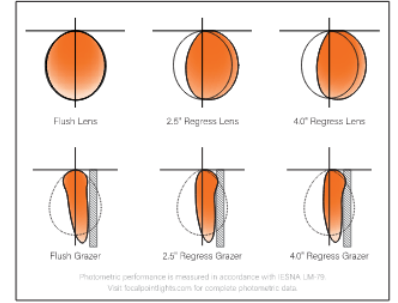
DIMENSIONAL DATA



FEATURES

Seem 4 perimeter provides a glowing transition between ceiling and wall.
 Flush, 2.5" regress or 4.0" regress, available with standard lens or grazer shielding options.
 Adjustable housing option provides flexibility with +/- 3 inch adjustability for wall-to-wall illumination.
 Frosted acrylic lens provides uninterrupted illumination without pixels or shadows.
 Preferred Light: Lighting for better color rendition and human preference.
 Connected Solutions: Integrates with wired and wireless building lighting control systems.
 PoE compatible: Integrates with Power over Ethernet lighting systems via standard, low-voltage wires.

DISTRIBUTIONS



Site Athletic Lighting



EQUIPMENT LIST FOR AREAS SHOWN									
Pole				Luminaires					
QTY	LOCATION	SIZE	GRADE ELEVATION	MOUNTING HEIGHT	LUMINAIRE TYPE	QTY / POLE	THIS GRID	OTHER GRIDS	
4	P1-P4	50'	-	50'	TLC-LED-1200	2	2	0	
				40'	TLC-LED-600	1	0	1	
				50'	TLC-LED-900	1	1	0	
4	TOTALS					16	12	4	

Davis High School Aquatics Davis, CA

GRID SUMMARY	
Name:	Pool
Size:	165' x 75'
Spacing:	10.0' x 10.0'
Height:	3.0' above grade

ILLUMINATION SUMMARY	
MAINTAINED HORIZONTAL FOOTCANDLES	
Entire Grid	
Guaranteed Average:	60
Scan Average:	67.49
Maximum:	81
Minimum:	57
Avg / Min:	1.19
Guaranteed Max / Min:	2
Max / Min:	1.43
UG (adjacent pts):	1.26
CU:	0.60
No. of Points:	128

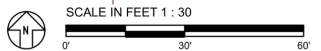
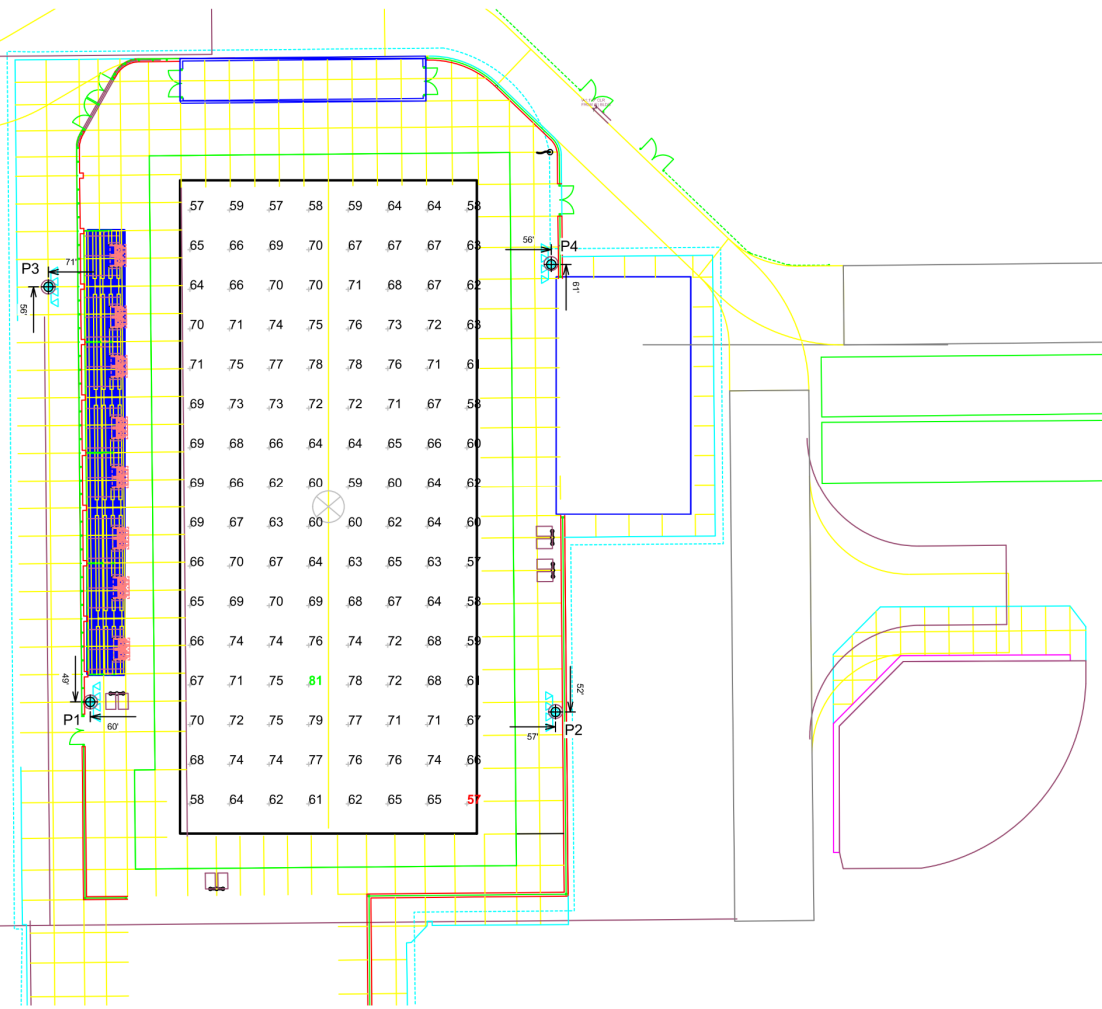
LUMINAIRE INFORMATION	
Applied Circuits:	A
No. of Luminaires:	12
Total Load:	12.92 kW

Guaranteed Performance: The ILLUMINATION described above is guaranteed per your Musco Warranty document and includes a 0.95 dirt depreciation factor.

Field Measurements: Individual field measurements may vary from computer-calculated predictions and should be taken in accordance with IESNA RP-6-15.

Electrical System Requirements: Refer to Amperage Draw Chart and/or the "Musco Control System Summary" for electrical sizing.

Installation Requirements: Results assume ± 3% nominal voltage at line side of the driver and structures located within 3 feet (1m) of design locations.



ENGINEERED DESIGN By: H.Sabers · File #211030C · 08-Jun-21

Pole location(s) + dimensions are relative to 0,0 reference point(s) ⊗



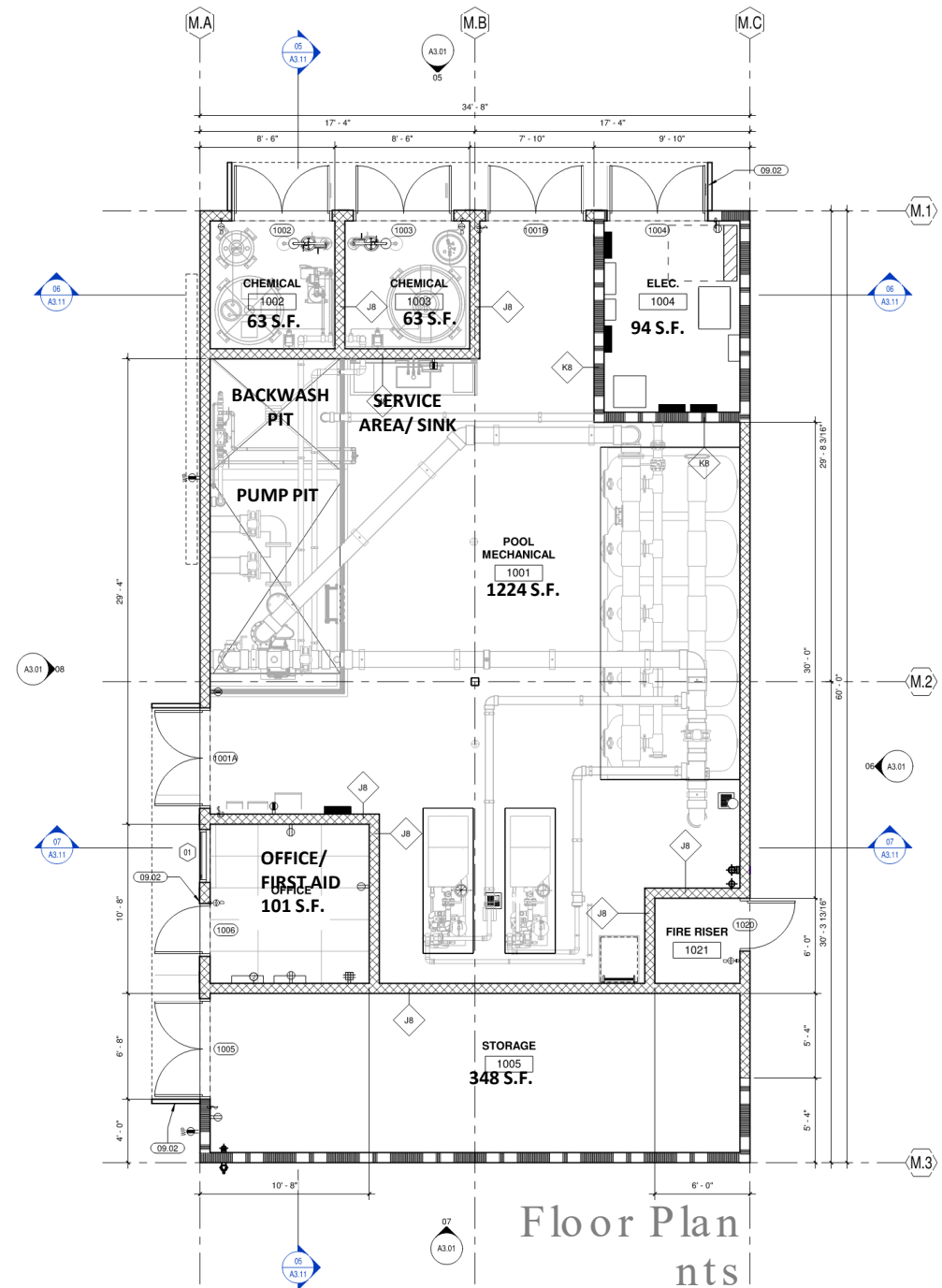
Not to be reproduced in whole or part without the written consent of Musco Sports Lighting, LLC. ©1981, 2021 Musco Sports Lighting, LLC.

ILLUMINATION SUMMARY

Architecture — Program Confirmation

Pool Mechanical Building/Office:

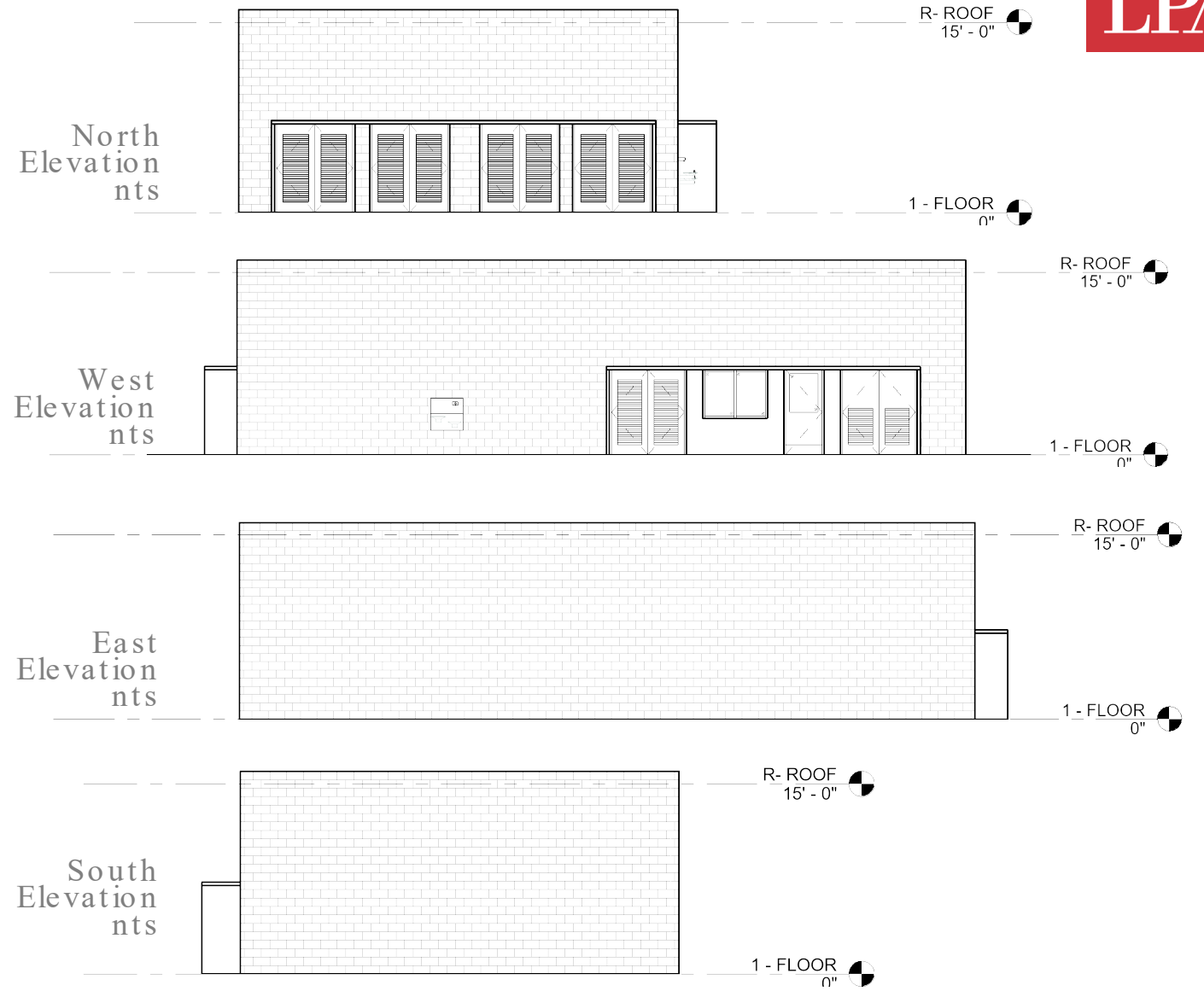
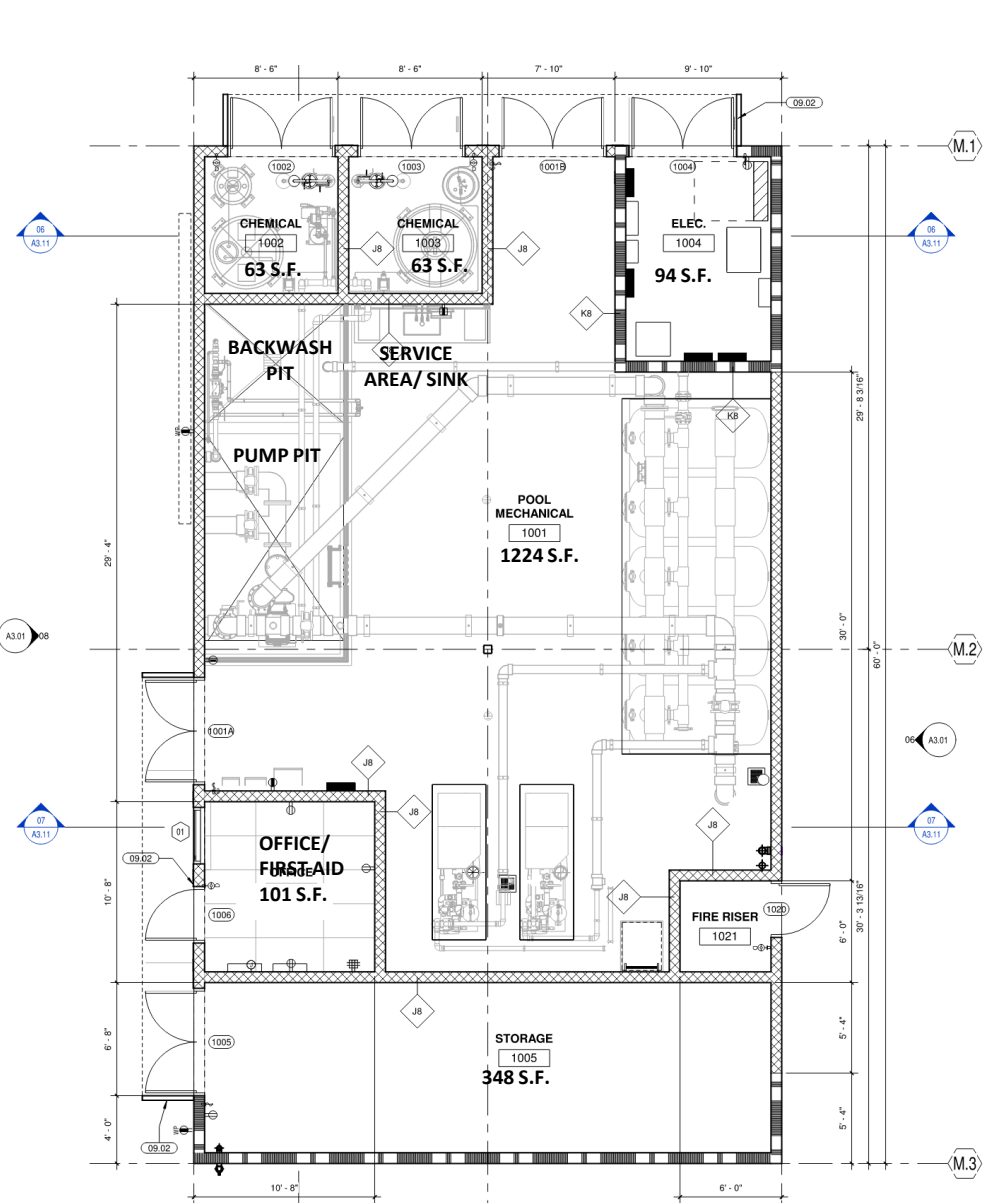
- Staff Office/First Aid Room
- Mechanical/Pump Room
- Storage
- Electrical Room
- Chemical Storage Rooms
- CMU block construction



Floor Plans



Architecture - Pool Mechanical Building



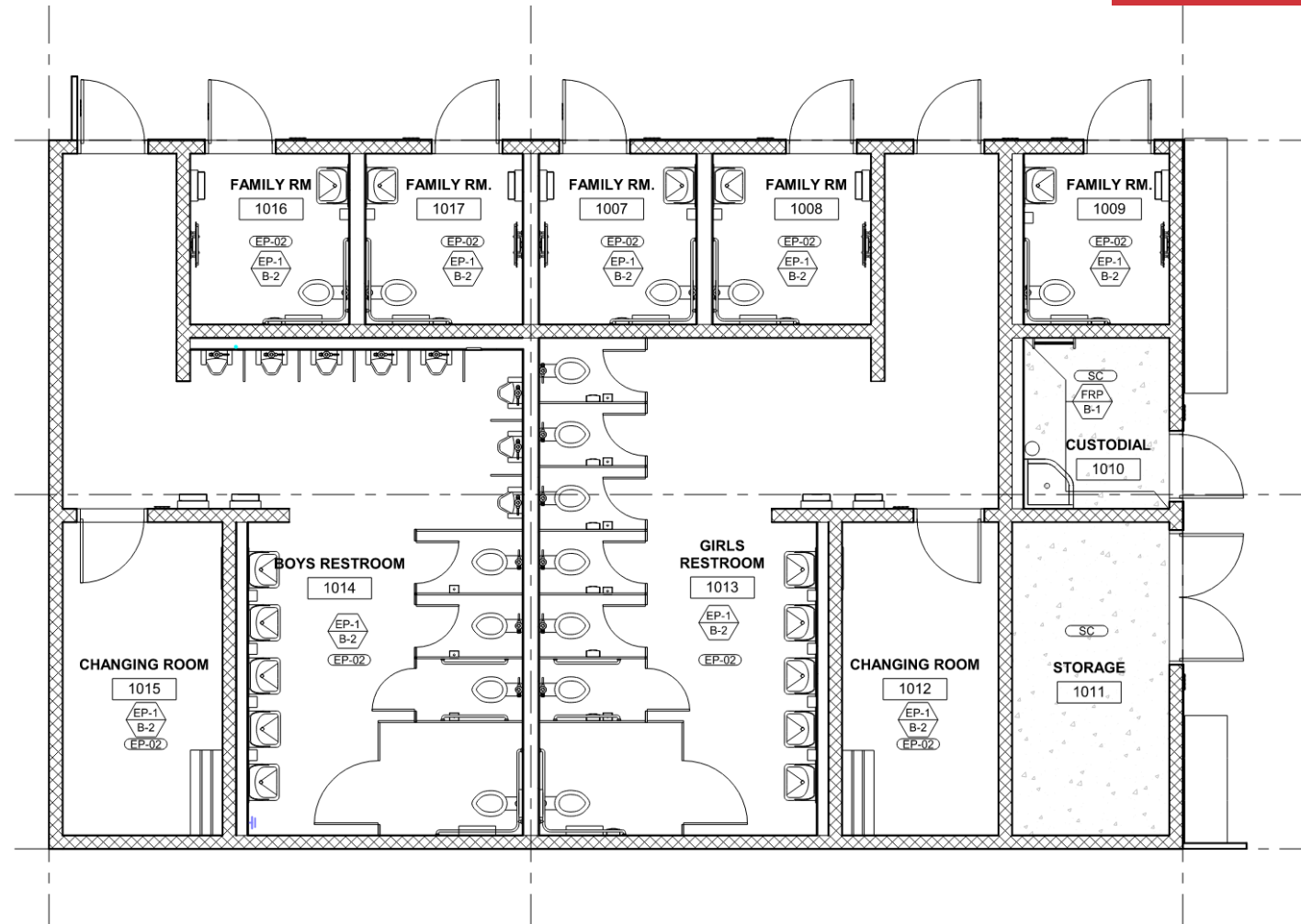
Architecture - Pool Mechanical Building



Architecture - Program Confirmation

Restroom Building:

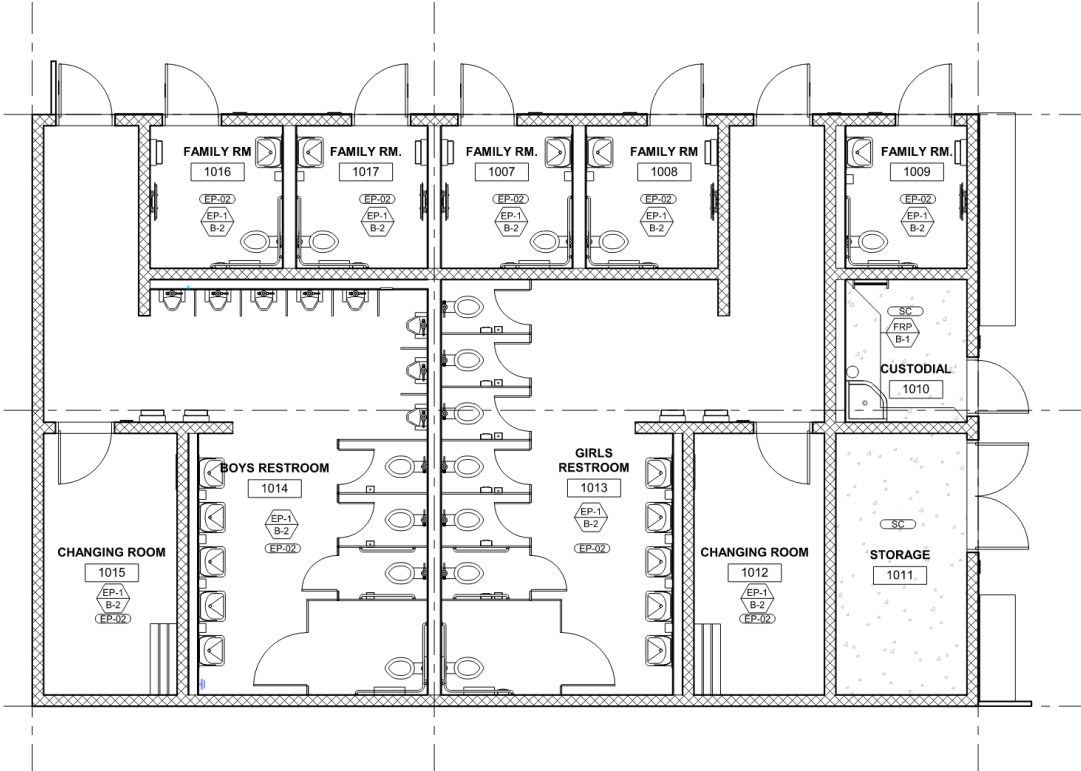
- Restrooms
- Changing Rooms
- Gender neutral restrooms/changing rooms
- Storage
- Custodial closet & electrical/storage rooms



Floor Plan
Not to Scale

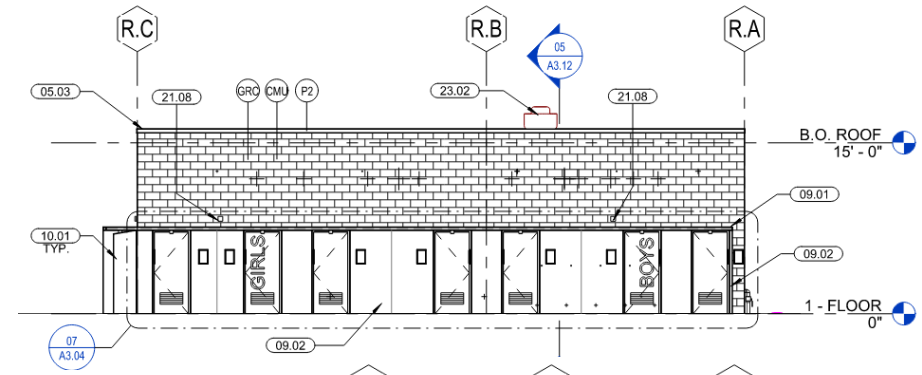
Architecture

Restroom Building

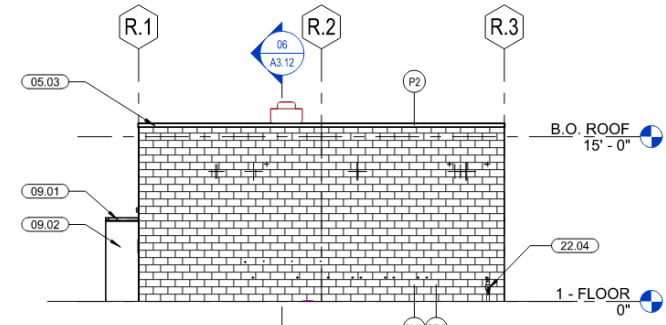


Floor Plan
Not to Scale

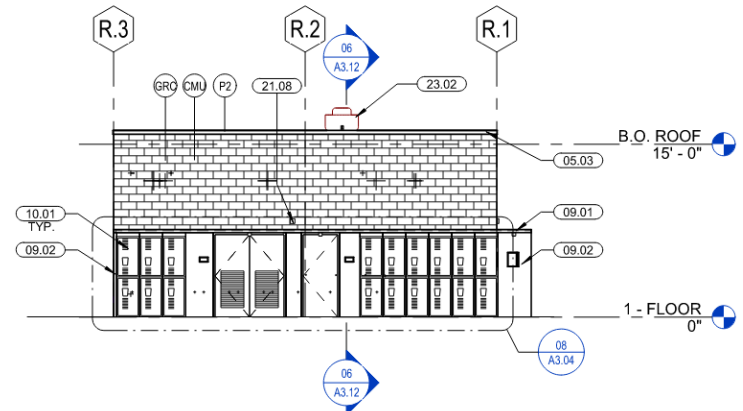
North
Elevation



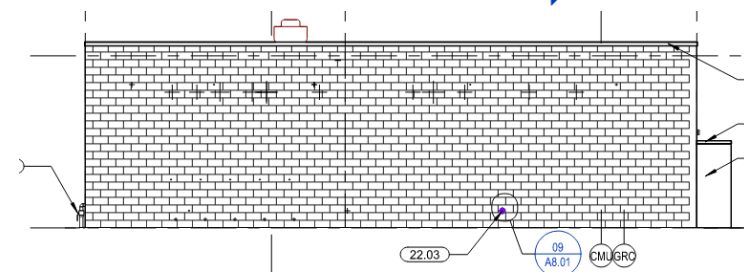
West
Elevation



East
Elevation



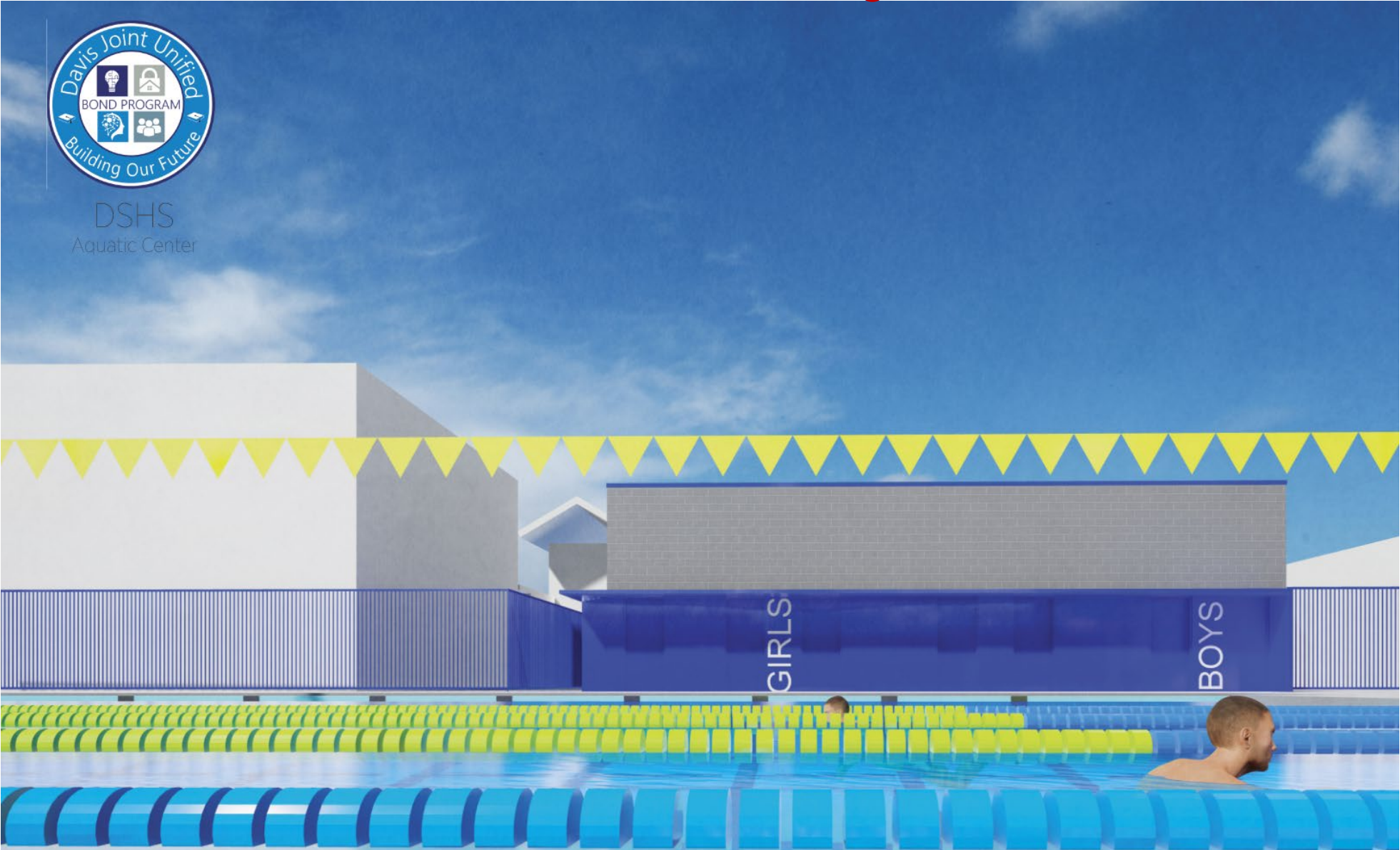
South
Elevation



Architecture - Restroom Buildings



DSHS
Aquatic Center

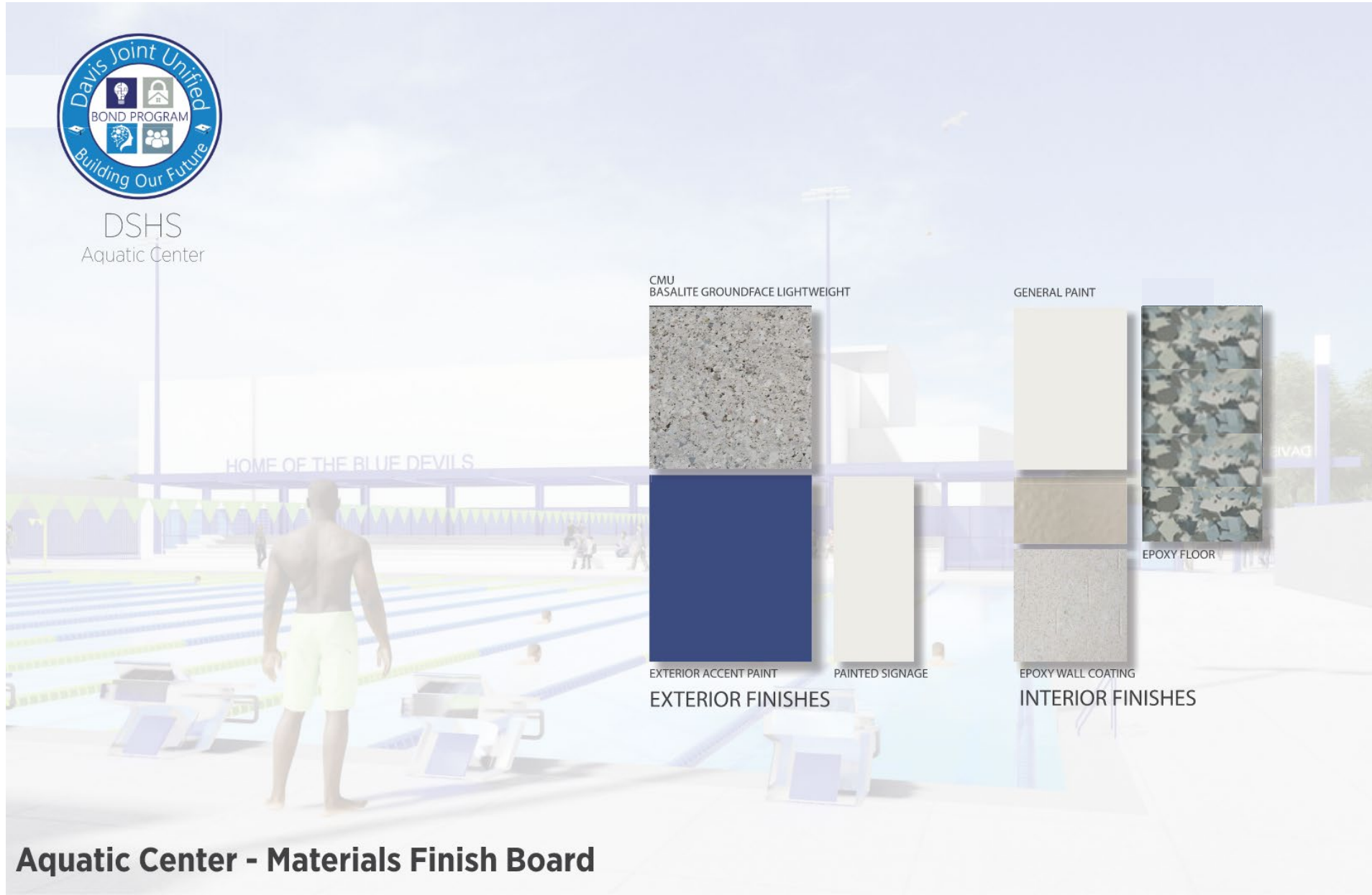


Aquatic Center - View to Restroom Building

Architectural Exterior Finishes



DSHS
Aquatic Center



CMU
BASALITE GROUNDFACE LIGHTWEIGHT



GENERAL PAINT



EPOXY FLOOR



EXTERIOR ACCENT PAINT



PAINTED SIGNAGE

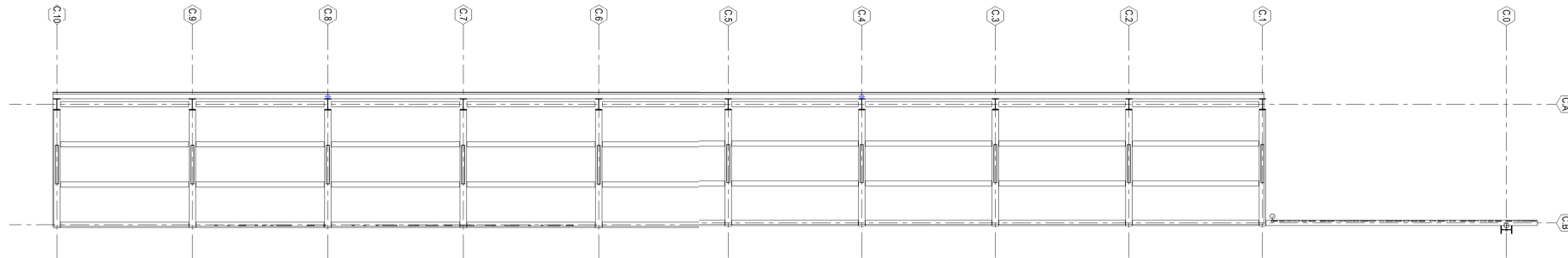


EPOXY WALL COATING

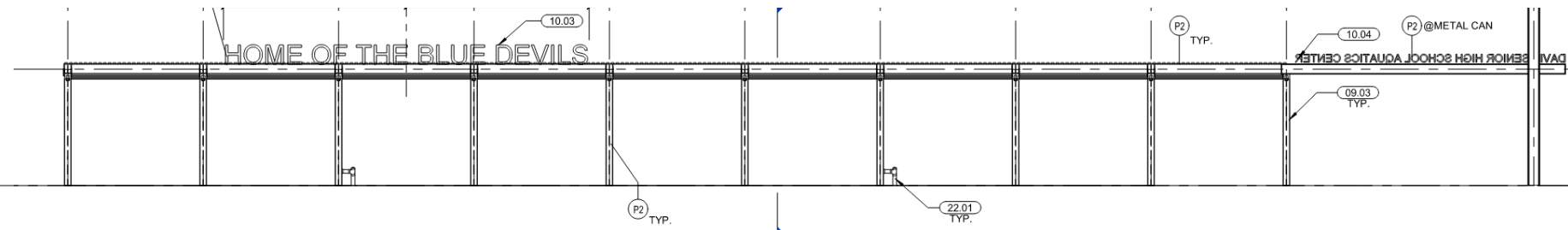
EXTERIOR FINISHES

INTERIOR FINISHES

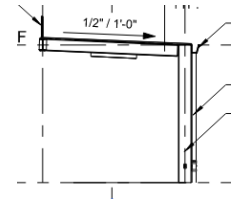
Bleacher Shade Canopy



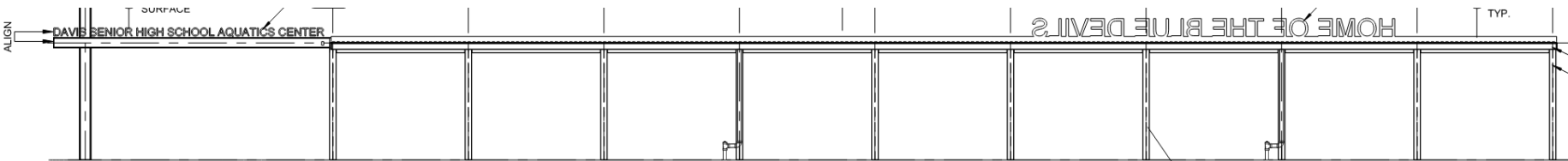
Plan View
nts



East Elevation
(view from pool)
nts



North Elevation
(side view)
nts



West Elevation
(view from entry)
nts

Perspective

