



DJUSD Volunteer Health & Safety Orientation February 2021

This orientation provides training on:

- Health and Safety Practices to reduce the spread of COVID19
- Social Emotional Learning
- Mandated Reporting

State Tiered Monitoring System

County risk level	New cases	positive tests
<p>WIDESPREAD</p> <p>Many non-essential indoor business operations are closed</p>	<p>More than 7</p> <p>daily new cases (per 100k)</p>	<p>More than 8%</p> <p>positive tests</p>
<p>SUBSTANTIAL</p> <p>Some non-essential indoor business operations are closed</p>	<p>4 - 7</p> <p>daily new cases (per 100k)</p>	<p>5 - 8%</p> <p>positive tests</p>
<p>MODERATE</p> <p>Some indoor business operations are open with modifications</p>	<p>1 - 3.9</p> <p>daily new cases (per 100k)</p>	<p>2 - 4.9%</p> <p>positive tests</p>
<p>MINIMAL</p> <p>Most indoor business operations are open with modifications</p>	<p>Less than 1</p> <p>daily new cases (per 100k)</p>	<p>Less than 2%</p> <p>positive tests</p>

Site Preparedness

- Masks, face shields, gloves, gowns available
- Handwashing stations and hand sanitizer in classrooms, MPR, work areas, and gyms
- Frequent monitoring of hand hygiene supplies
- Hydration Stations (no water fountains)
- Improved ventilation (MERV 13 filters)
- Portable air purifiers in classroom
- Signage to remind need for face covering, distancing, frequent handwashing

Site Preparedness

Enhanced Cleaning Measures

- Front office, bathrooms, staff work rooms, health offices and classrooms disinfected daily
- Focus on “high touch” points such as:
 - Light switches, doorknobs, handles
 - Desks and tables (that are being used)
 - Counter tops
 - Dispensers, faucets, sinks, toilets
- Soap and paper towels replenished frequently

Contact Tracing Procedures

Staff, Family, & Volunteers

- Report positive/probable exposure to:
covid19reporting@djUSD.net (530) 235 -6137

Health Services

- Interviews family/staff
- Advises on health issues and protocols
- Notifies YCPH of positive or probable cases
- Quarantine groups/school sites as needed
- Communication to affected individuals
- Contacts families/staff before return to campus

Face Covering per CDPH Guidelines

- All staff/students (preschool - grade 12) must wear face covering unless medically exempt
 - Face covering is required at all times - indoors and outdoors
 - May be removed for eating
 - Contact Nurse regarding medical exemption
- Staff may wear a face shield with drape briefly while in the classroom to provide language acquisition services
- Face shield not a replacement for a face covering

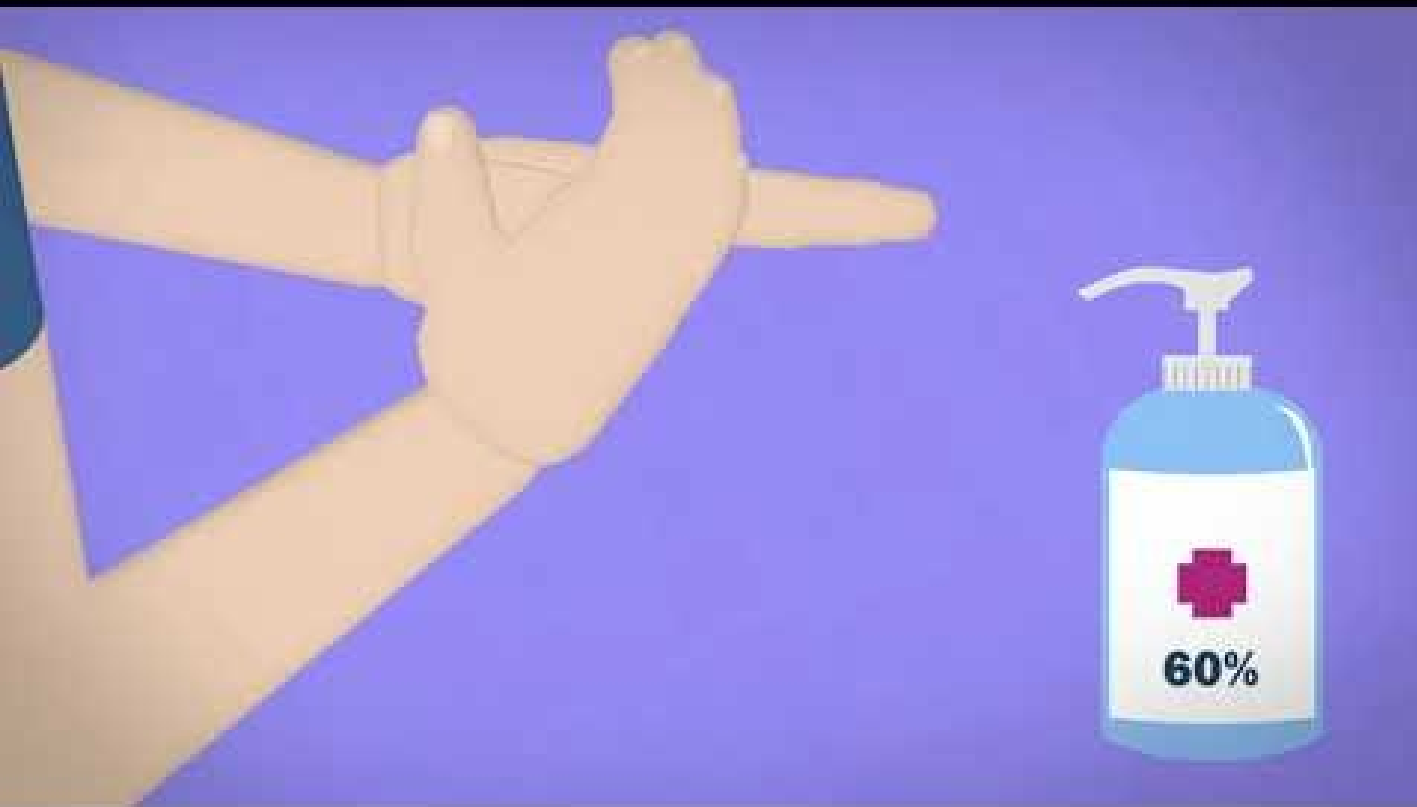
Face Covering per CDPH Guidelines

- Covers nose, mouth & chin
- Secured with ties/straps
- Breathable and at least 2 layers
- Cannot have a valve that allows air flow, putting others nearby at risk
- District can provide face covering when needed
- Should be cleaned daily
- “If you see something, say something”



Handwashing Hygiene

- Wash hands before leaving for school and when arriving home
- Sanitize hands when entering & exiting classroom
- Hands must be washed with soap and water: before eating, after using the restroom, and when visibly dirty
- Develop structured routines for hand hygiene



Physical Distancing & Limit Sharing

- Maintain 6 feet apart at all times
- Students brings own reusable water bottle every day
- Students have their own set of supplies (pens, crayons, pencils, paper, manipulatives)
- Student's supplies stored separately and labeled
- Supplies that must be shared should be cleaned between students

Just stay 6
feet apart. :)



Daily Self -Screening

- Before leaving for school each day, all volunteers must screen themselves for illness
 - If new symptoms present, stay home
 - Alert supervisor of absence, as needed
 - Report illness to COVID Reporting Line
 - Contact health care provider for guidance
- If COVID19 is ruled out, may return to campus
 - **72 hours** after fever is resolved without the use of fever-reducing medication
 - Other symptoms are improving

Screening Yourself for Illness



Screening Students for Illness

- Students/families are expected to self-screen daily before coming on campus
- When students arrive, [visually screen](#) for illness
- Use hand sanitizer upon arrival
- If student appears ill/reports any risk factors:
 - Provide student with a surgical face mask to place over their face covering
 - Instruct student to wait at least six feet from others, call parent to pick up student

When Volunteer Becomes Ill on Campus

- Place surgical mask over face covering
- Contact supervisor for guidance and arrange student supervision before leaving campus
- Alert covid19reporting@djUSD.net to report name, phone number, school site, and symptoms
- Self-isolate at home and do not return to campus until cleared by District Health Services staff
- Seek immediate medical attention for:
 - Trouble breathing
 - Persistent pain/pressure in chest
 - Bluish lips or face
 - inability to wake or stay awake
 - New confusion

Classroom Set -up

- Leave room as you found it
- Desks/tables spaced at least 6 feet apart
- Turn on portable air purifiers
- Open at least one door or window to enhance ventilation, if possible
- Report any ventilation or classroom space issues to site administrator

Information to Tell Students

- Face covering worn at all times
- Maintain physical distance (6 feet)
- Use hand sanitizer as needed
- Stay at assigned desk or space, no switching
- Student will have their own set of supplies
- Follow safety practices at home and school
- Follow all directions from group leader

Promoting Distancing on Campus

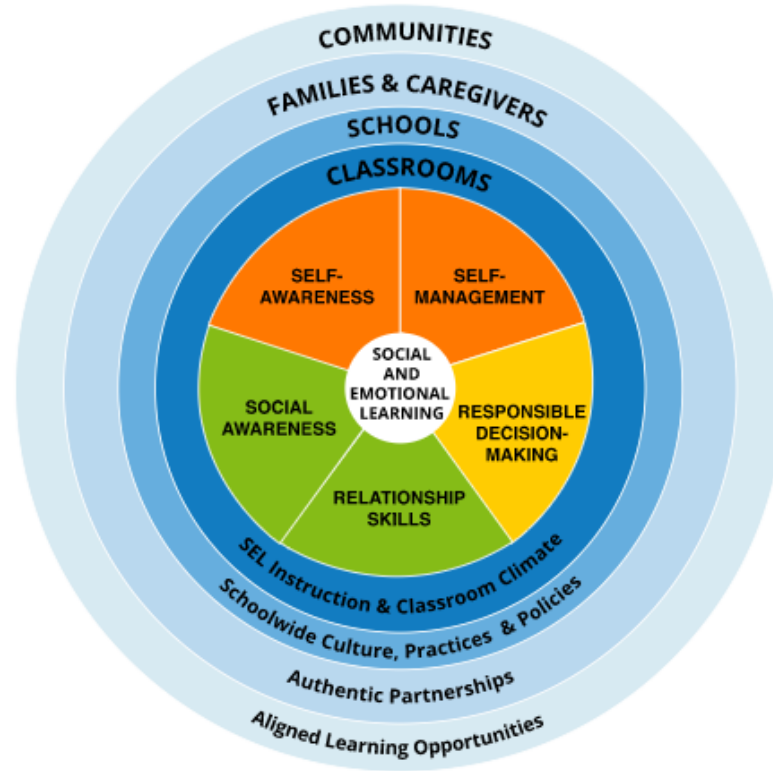
- Escort students to parking lot to await pick up -
- If you see student, staff or parents engaging in unsafe health and safety behavior:
 - Remind them of rules
 - Report ongoing concerns to administrator
- Eat outside and physically distanced
 - Students should not face each other when eating

Health and Safety Training Resources

- Staff Health and Safety training resources can be found on the [Health Services / Staff Training](#) website
- For more information visit the [COVID19 Return to Campus Website](#)

Social Emotional Learning

Extracurricular activities allow us to prioritize relationships to build community to foster social emotional learning.



Trauma -informed Lens

- A brain in “fight or flight” cannot learn
- “What happened?” vs. “Why did you do that?”
- Emotional Regulation
 - Brain breaks
 - Mindfulness
- Mental health support - any mention of suicide/harm must be reported immediately to:
 - Site administrator, school counselor or a Manager of Prevention & Wellness

Mandated Reporting

- All volunteers are mandated reporters and must report suspected :
 - Physical abuse or Sexual abuse
 - Willful cruelty or unjustified punishment including emotional abuse
 - Unlawful corporal punishment or injury
 - Neglect
- When in doubt - REPORT

Mandated Reporting - continued

- Immediately call:
 - Child Welfare Services of Yolo County 530-669-2345 or
 - Davis PD: 530-747-5400, press 5. (If child is in imminent danger)
- After the call, within 36 hours, fax written Suspected Child Abuse Report (11166) to:
 - Child Welfare Services of Yolo County
 - Fax: (530) 666-8468, and
 - Davis Police Department fax: (530) 757-7102

Volunteer Guidelines

- **Confidentiality** : Keep student and staff information confidential.
- **Technology** : Contact our tech department at techsupport@djUSD.net if needed.
- **Discipline** : Gently redirect, but all discipline should be referred to staff.
- **Fingerprinting** : All volunteers will be fingerprinted at no cost.
- **DJUSD Website:** [Volunteer Guidelines](#)

Thank you for your
commitment to our
students.

